



1Z0-241

(PeopleSoft Application Developer I: PeopleTools & PeopleCode)

Document version: 27.09.11

Important Note About 1Z0-241 PDF

techeXams' **1Z0-241 PDF** is a comprehensive compilation of questions and answers that have been developed by our team of certified professionals. In order to prepare for the actual exam, all you need is to study the content of this exam questions. An average of approximately 10 to 15 hours should be spent to study these exam questions and you will surely pass your exam. It's our guarantee.

Copyright

techeXams holds the copyright of this material. techeXams grants you a limited license to view and study this material, either for personal or commercial use. Unauthorized reproduction or distribution of this material, or any portion thereof, may result in severe civil and criminal penalties, and will be prosecuted to the maximum extent possible under law.

Disclaimer

Neither this guide nor any material in this guide is sponsored, endorsed or affiliated with any of the respective vendor. All trademarks are properties of their respective owners.

Question: 1

You write a PeopleCode program that checks whether the user is selecting an existing search key value on the Search page or creating a new search key value. Which system variable do you use?

- A. %Add
- B. &Add
- C. %Mode
- D. &Mode
- E. %Search
- F. &Search

Answer: C

Question: 2

Which three statements are true regarding Query Profile? (Choose three.)

- A. The Query Profiles page enables users to run existing queries and create new ones.
- B. The Query Profiles page enables you to specify the type of access that users have when they work with PeopleSoft Query.
- C. By default, the query profile does not give users access to all PeopleSoft Query features, even if you gave them access to PeopleSoft Query.
- D. If a user has more than one permission list, PeopleSoft Query uses the highest time-out value as defined in the Time-out Minutes section of the user's permission lists.
- E. The Query Profiles page enables you to restrict the types of queries that users can create, limit the number of rows returned, or set the time that a query can run before it times out.
- F. By default, the Only Allowed to Run Queries option on the Query Profiles page is selected, and each permission list that is granted to a user or role has the possibility to have capabilities added.

Answer: B, D, E

Question: 3

Examine this PeopleCode snippet: `class OCP_ROWSET extends Rowset; property integer FilledRowCount get; method OCP_ROWSET(&strRecName As string, &strDataFld As string,`

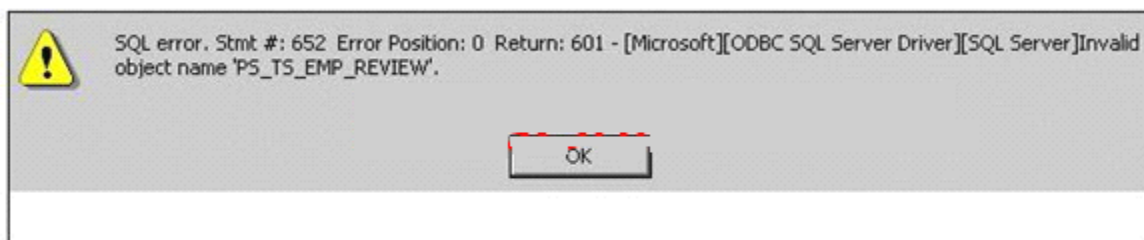
&strGetOrCreate As string); methodInsertRow(&iRow As integer) Returns boolean; Select the correct statements. (Choose all that apply.)

- A. OCP_ROWSET is the constructor method for the OCP_ROWSET class.
- B. Executing the RO_ROWSET method instantiates an object of the OCP_ROWSET class.
- C. The OCP_ROWSET method runs automatically whenever an object is instantiated using the OCP_ROWSET class.
- D. The OCP_ROWSET method must initialize the ROWSET class.
- E. The OCP_ROWSET method is added to the ROWSET class, and, by extension, to any instances of the ROWSET class.

Answer: A, C, D

Question: 4

View the Exhibit.



You are testing an application that you just completed. You access the content reference and select a search key. When you click the Search button, you see the error shown in the image. Select the next course of action.

- A. Remove the PS_TS_EMP_REVIEW field from the record definition.
- B. Run the Alter process for the PS_TS_EMP_REVIEW record definition.
- C. Run the Build process for the PS_TS_EMP_REVIEW record definition.
- D. Examine the record definition properties and manually create a BUILD script.
- E. Verify that you created and properly configured the PS_TS_EMP_REVIEW page.

Answer: C

Question: 5

Are parameters passed to user-defined internal and external PeopleCode functions by reference or by value?

- A. The first parameter is the input parameter, and the second parameter is output parameter.
- B. User-defined internal and external PeopleCode function parameters are always passed by value.
- C. User-defined internal and external PeopleCode function parameters are always passed by reference.
- D. User-defined internal and external PeopleCode function parameters can be passed as input or as output, depending on the function.
- E. User-defined internal and external PeopleCode function parameters can be passed by reference or by value, depending on the function.

Answer: C

Question: 6

Select the two rules about PeopleSoft prompt table mechanics. (Choose two.)

- A. The prompt matches fields based on name, data type, and length.
- B. The prompt automatically filters the rows based on higher-level key values in the buffer.
- C. The prompt selects the highest-level key on the prompt record definition unless the EFFDT field is present.
- D. The prompt automatically selects for the lowest-level key on the prompt record definition ignoring the EFFDT and EFF_STATUS fields.

Answer: B, D

Question: 7

Select the two characteristics of summary pages that set them apart from non-summary pages. (Choose two.)

- A. They are display-only.
- B. They contain only level zero.
- C. They typically contain no related fields.
- D. They reference one record definition.

Answer: A, C

Question: 8

Here is a partial list of events in the Component Processor flow. 1. SQL select 2. Search page 3. Record defaults 4. Add row to buffer 5. Standard system field edits 6. Wait for user interaction What is the correct order?

- A. 1, 2, 3, 4, 5, 6
- B. 2, 1, 4, 3, 6, 5
- C. 6, 2, 1, 4, 3, 5
- D. 2, 1, 3, 4, 5, 6
- E. 2, 4, 5, 1, 3, 6

Answer: B

Question: 9

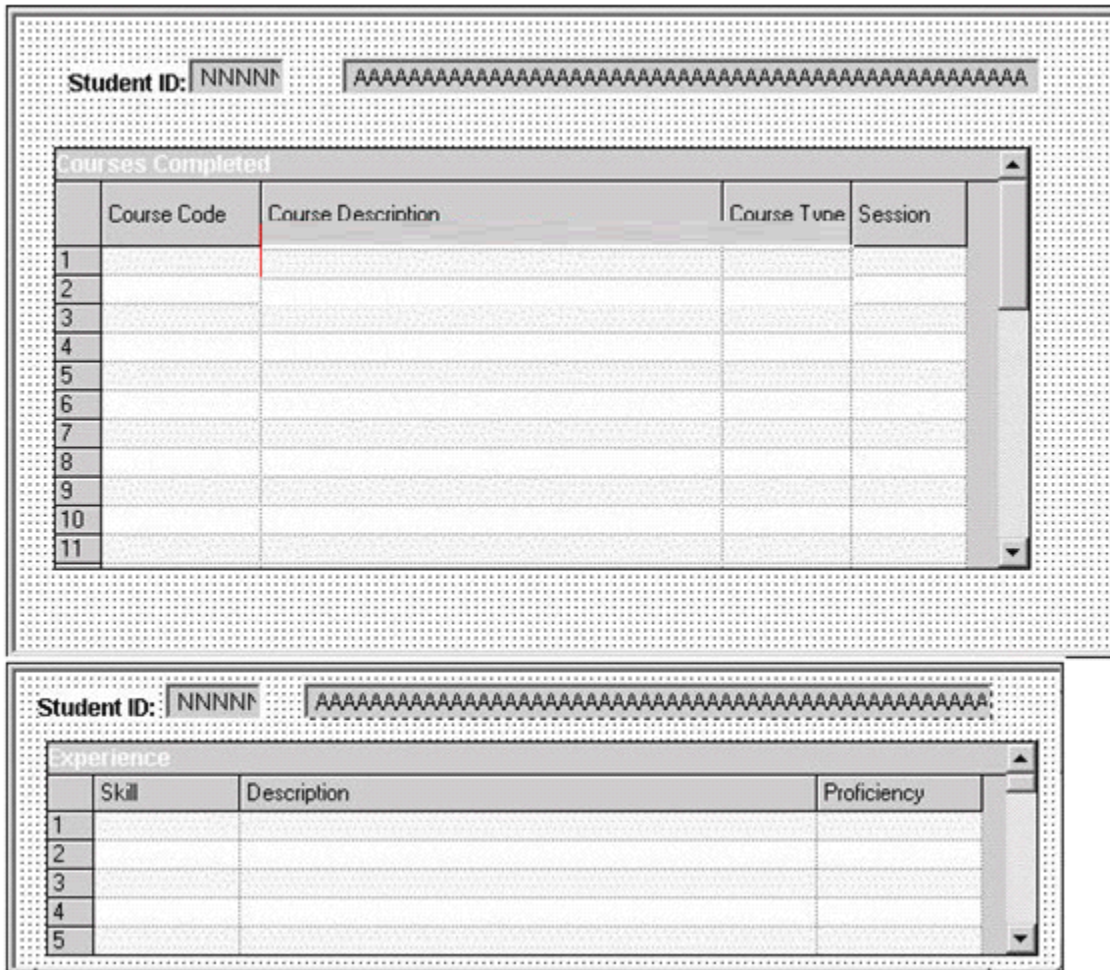
Select the three primary advantages of using the Message Catalog. (Choose three.)

- A. Messages are reusable.
- B. You can enter messages through a browser.
- C. Developers can secure messages through Definition Security.
- D. Developers can search for and use messages in Application Designer.
- E. Messages in the catalog are easier to translate in globalization situations.

Answer: A, B, E

Question: 10

View the Exhibits.



Examine the two pages and select the correct statement.

- A. You can group these pages in the same component.
- B. You cannot group these pages in the same component.

Answer: A

Question: 11

Select the four items that you can use as translate values for the COLOR field. (Choose four.)

- A. BLK

- B. W-02
- C. BRWN
- D. PURPL
- E. BLACK
- F. 1-BL

Answer: A, B, C, F

Question: 12

View the Exhibit.

1	<pre>If All(PSU_CRS_SESSN.START_DATE, PSU_CRS_SESSN.END_DATE) And PSU_CRS_SESSN.START_DATE > PSU_CRS_SESSN.END_DATE Then Error MessageGet(1040, 2 "Message Not Found") End-If;</pre>
2	<pre>If PSU_EMP_RVW_RVR.REVIEWER_ID = 0 Then COMMENT Reviewer is an employee; COMMENT Disable REVIEWER_ID; PSU_EMP_RVW_RVR.REVIEWER_ID.Value = PSU_EMP_RVW_RVR.EMPLID; PSU_EMP_RVW_RVR.REVIEWER_ID.Enabled = False; End-If;</pre>
3	<pre>Local Message &request, &response; Local Row &Row; Local Rowset &Rowset;</pre>
4	<pre>Local Field &Crstype; &Crstype = GetField(PSU_COURSE_TBL.COURSE_TYPE); &Crstype.Value = "H"; &Crstype.Enabled = False;</pre>
5	<pre>&OLD_PRICE > &TOTAL_PRICE; &TOTAL_PRICE = &QTY_ORDERED * &PRICE; &GRAND_TOTAL = &GRAND_TOTAL + &TOTAL_PRICE - &OLD_PRICE;</pre>

Which two PeopleCode snippets contain syntax errors? (Choose two.)

- A. 1
- B. 2



- C. 3
- D. 4
- E. 5

Answer: B, E

Question: 13

View the Exhibit.

Will this component be accessed as target content or as a homepage pagelet?
 Target Content Homepage Pagelet

Portal Name: EMPLOYEE Select... Open Selected

Folder Name: PSU_EMPLOYEE Select... Open Selected

Content Reference Name: TS_EMP_REVIEW_GBL

Content Reference Label: Appraisals

Long Description (254 Character): Enter, modify, and view employee reviews

Sequence Number: 5 Product: PT

Template Name: DEFAULT_TEMPLATE

Object Owner Id:

Node Name: PSFT_TRN Select... Open Selected

Always use default local node?

Enter the base URI to be used when you click the "Open Selected" buttons. Example: http://localhost/psp/ps/

"Open" URI Base: http://eddpr40p1.us.oracle.com:8010/psp/T1B84801/

You begin to register a component using the registration wizard. Based on the values that appear in the dialog box, select the best course of action.

- A. Continue registering the component as it is.
- B. Stop the registration process to investigate why this component is already registered.
- C. Change the user-facing fields to mixed case and make them less technical and then continue registering the component.

Answer: B

Question: 14

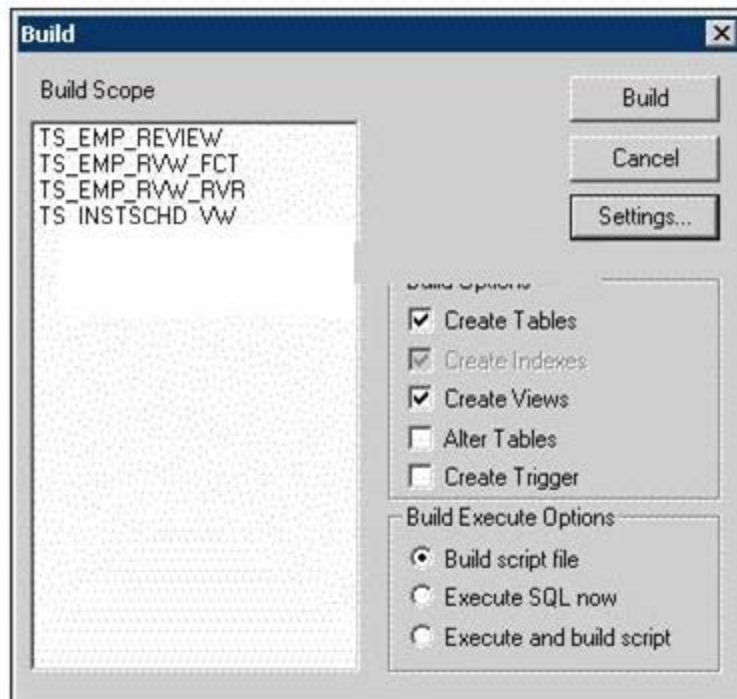
Select the three tasks that you can perform using the Registration Wizard. (Choose three.)

- A. Add pages to existing components.
- B. Add components to existing menus.
- C. Add components to a portal registry.
- D. Add components to a permission list.
- E. Create new menus and add components to the new menus.

Answer: B, C, D

Question: 15

View the Exhibit.



Based on this Build dialog box, select the two options that are true. (Choose two.)

- A. When you click the Build button, the TS_EMP tables are created.
- B. When you click the Build button, nothing happens to your database.
- C. When you click the Build button, the TS_EMP tables may lose existing data.
- D. When you click the Build button, the TS_INSTSCHED_VW view is created.
- E. When you click the Build button, Application Designer generates a script file.

Answer: B, E

Question: 16

What type of PeopleCode looping construct continues to loop as long as the logical_expression evaluates to TRUE?

- A. For
- B. While
- C. Do While
- D. Do Until
- E. Repeat-Until

Answer: B

Get Full Version of Exam 1Z0-241 PDF Q&A

techeXams presents authentic, genuine and valid study material, which promise 100% success in very first attempt. To take optimal results for 1Z0-241 exam, you need to buy full version of 1Z0-241 question and answer. An average of approximately 10 to 15 hours should be spent to study these exam questions and you will surely pass your exam. So come join us and quench your thirst for knowledge.

Get complete 1Z0-241 questions and answers by visiting URL

["http://www.techexams.ws/exams/1Z0-241.do"](http://www.techexams.ws/exams/1Z0-241.do)