



350-029

(CCIE Service Provider Written)

Document version: 1.04.11

Important Note About 350-029 PDF

techeXams' **350-029 PDF** is a comprehensive compilation of questions and answers that have been developed by our team of certified professionals. In order to prepare for the actual exam, all you need is to study the content of this exam questions. An average of approximately 10 to 15 hours should be spent to study these exam questions and you will surely pass your exam. It's our guarantee.

Copyright

techeXams holds the copyright of this material. techeXams grants you a limited license to view and study this material, either for personal or commercial use. Unauthorized reproduction or distribution of this material, or any portion thereof, may result in severe civil and criminal penalties, and will be prosecuted to the maximum extent possible under law.

Disclaimer

Neither this guide nor any material in this guide is sponsored, endorsed or affiliated with any of the respective vendor. All trademarks are properties of their respective owners.

Question: 1

What protocol is used for Path Setup in MPLS traffic engineering?

- A. OSPF
- B. ISIS
- C. BGP
- D. RSVP
- E. PIM

Answer: D

Question: 2

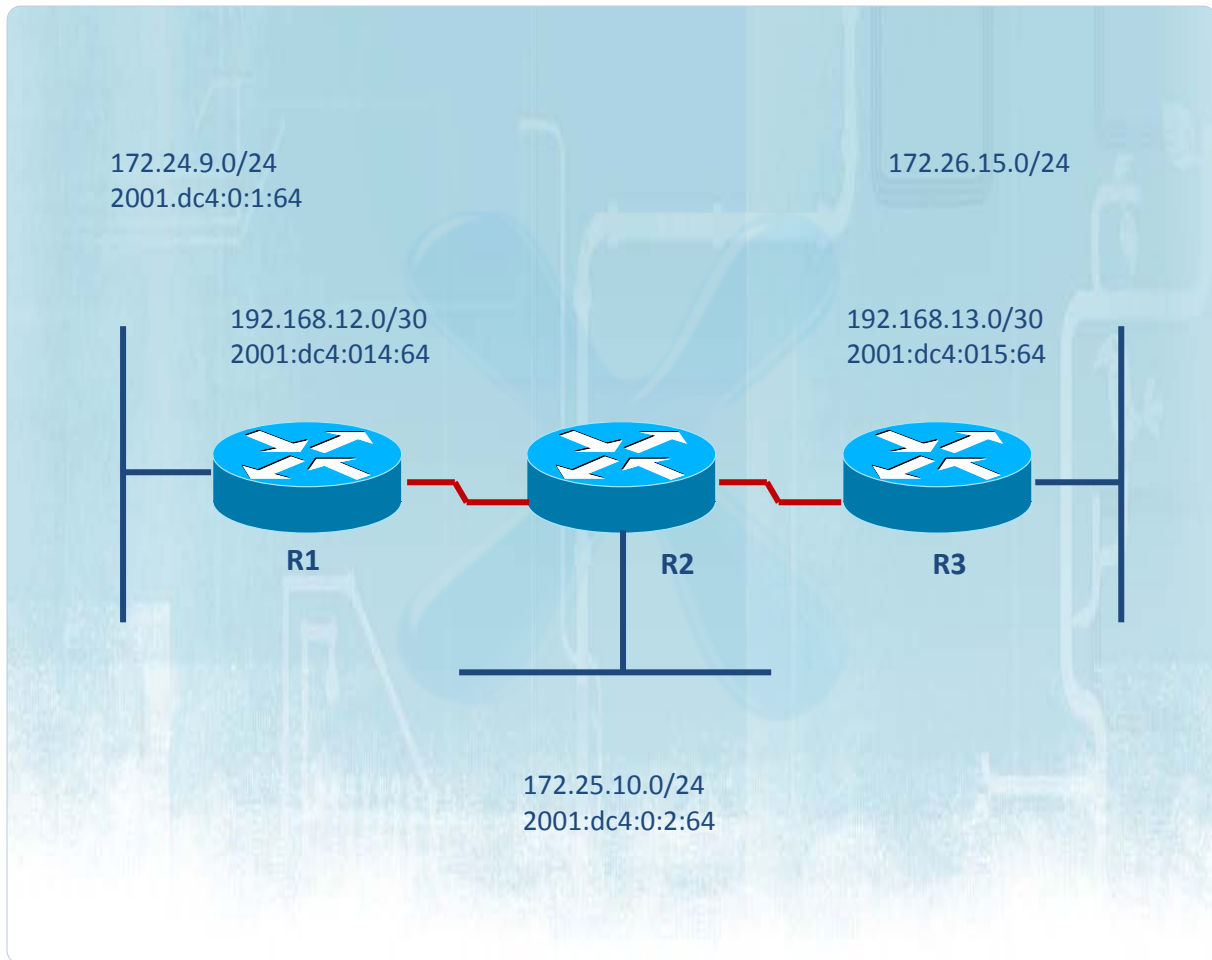
Which of the following is a correct arrangement of APS Action Requests in order of priority, with highest priority first?

- A. Lockout of Protection, Manual Switch, SD, Forced Switch
- B. Manual Switch, Lockout of Protection, Forced Switch, SD
- C. Lookout of Protection, Forced Switch, SD, Manual Switch
- D. Manual Switch, Forced Switch, Lockout of Protection, SD
- E. SD, Lockout of Protection, Forced Switch, Manual Switch
- F. None of the above

Answer: C

Question: 3

Refer to the exhibit.



Your customer has enabled IPv6 and IPv4 on routers R1 and R2, both running ISIS routing protocol, and they can no longer reach R3 network 172.26.15.0/24 (R3 does not enable IPv6, enables IPv4 only).

Which two steps should be taken to restore reachability to PS? (Choose Two.)

- A. Enable wide metrics.
- B. Enable OSPFv3 to support IPv4 and IPv6 simultaneously.
- C. Configure static routes to all unreachable networks and redistribute to IS-IS.
- D. Transition to IS-IS Multiple Topology Mode on R1 and R2.
- E. Transition to IS-IS Multiple Topology Mode on R3.
- F. Create an IPv6 tunnel from R2 to R3.

Answer: A, D

Question: 4

What is periodically multicasted (every 10 seconds) by the DIS on a LAN to ensure IS-IS Link State Database accuracy?

- A. PSNP
- B. CSNP
- C. LSP
- D. IIH
- E. ISH

Answer: B

Question: 5

What best explains the BGP route-reflector function?

- A. BGP route-reflector should be in forwarding path of data coming from its clients.
- B. BGP route-reflector does not have to be in the forwarding path & data coming from its clients.
- C. BGP route-reflector will stop reflecting the routes if they're not directly-connected clients.
- D. None of the above.

Answer: B

Question: 6

Which 4 statements regarding MPLS Label Stack Encoding is true?

- A. A value of 4 represents the "Implicit NULL Label."
- A value of 0 represents the "IPv4 Explicit NULL Label."
- C. A value of 1 represents the "Router Alert Label". The use of this label is analogous to the use of the "Router Alert Option" in IP packets (for example, ping with record route option).
- D. A value of 2 represents the "IPv6 Explicit NULL Label"
- E. A value of 1 represents the "IPv1 Explicit NULL Label"
- F. A value of 3 represents the "Implicit NULL Label"

Answer: B, C, D, F

Question: 7

When should traffic shaping be implemented on Frame Relay PVC s? (Choose two)

- A. When you want to drop excess traffic above the CIR
- B. When there is a speed mismatch between the central site and the remote site.
- C. When using Frame Relay SVCs
- D. When over-subscribing the central site link

- E. When LLQ is implemented on the Frame Relay PVC.
- F. When Multilink PPP LFI is implemented on the Frame Relay PVC.

Answer: B, D

Question: 8

There is MPLS VPN traffic traversing through a TE intermediate router. What is the MPLS packet label stack sequence (from outer to inner) for the VPN traffic on this router?

- A. TE label, IGP label, VPN label
- B. IGP label, TE label, VPN label
- C. TE label, VPN label, IGP label
- D. VPN label, IGP label, TE label
- E. IGP label, VPN label, TE label

Answer: A

Get Full Version of Exam 350-029 PDF Q&A

techeXams presents authentic, genuine and valid study material, which promise 100% success in very first attempt. To take optimal results for 350-029 exam, you need to buy full version of 350-029 question and answer. An average of approximately 10 to 15 hours should be spent to study these exam questions and you will surely pass your exam. So come join us and quench your thirst for knowledge.

Get complete 350-029 questions and answers by visiting URL

["http://www.techexams.ws/exams/350-029.do"](http://www.techexams.ws/exams/350-029.do)