



**350-040**

**(CCIE Storage Networking)**

Document version: 1.04.11

## Important Note About 350-040 PDF

techeXams' **350-040 PDF** is a comprehensive compilation of questions and answers that have been developed by our team of certified professionals. In order to prepare for the actual exam, all you need is to study the content of this exam questions. An average of approximately 10 to 15 hours should be spent to study these exam questions and you will surely pass your exam. It's our guarantee.

### Copyright

techeXams holds the copyright of this material. techeXams grants you a limited license to view and study this material, either for personal or commercial use. Unauthorized reproduction or distribution of this material, or any portion thereof, may result in severe civil and criminal penalties, and will be prosecuted to the maximum extent possible under law.

### Disclaimer

Neither this guide nor any material in this guide is sponsored, endorsed or affiliated with any of the respective vendor. All trademarks are properties of their respective owners.

Question: 1

**Which statements are true about a cascaded FICON topology? (Select three.)**

- A. It requires Fabric binding to be configured in all the switches.
- B. Only one hop (ie:traversing 2 switches) is supported.
- C. Separate ISLs must be used dedicated to FICON traffic.
- D. Two byte link addressing as defined in FC-SB2, is mandatory.

Answer: A, B, D

Question: 2

```
MDS3 _ 9509# install all system bootflash:m9500-sf1 ek9-mz.1.3.4.bin kickstart
bootflash:m9500-sfek9-kickstart-mz.1.3.4.bin Verifying image bootflash:/m9500-
sf1ek9kickstart-mz.1.3.4.bin [#####] 100% -- SUCCESS Verifying image
bootflash:/m9500-sf1ek9kickstart-mz.1.3.4.bin [#####] 100% -- SUCCESS
Extracting "sic" version from image bootflash:/m9500-sf1ek9kickstart-mz.1.3.4.bin
[#####] 100% -- SUCCESS Extracting "ips" version from image
bootflash:/m9500-sf1ek9kickstart-mz.1.3.4.bin [#####] 100% -- SUCCESS
Extracting "system" version from image bootflash:/m9500-sf1ek9kickstart-mz.1.3.4.bin
[#####] 100% -- SUCCESS Extracting "kickstart" version from image
bootflash:/m9500-sf1ek9kickstart-mz.1.3.4.bin [#####] 100% -- SUCCESS
Extracting "loader" version from image bootflash:/m9500-sf1ek9kickstart-mz.1.3.4.bin
[#####] 100% -- SUCCESS
Compatibility check is done: Module bootable impact install-type reason
2 yes non-disruptive rolling 3 yes disruptive rolling Hitless upgrade is not supported 5 yes
non-disruptive reset 6 yes non-disruptive reset
Images will be upgraded according to following table:
Do you want to continue with the installation (y/n)? [n]
What is the reason the upgrade would not be hit-less for the entire switch, above?
```

- A. The supervisor module requires a BIOS upgrade, which is disruptive.
- B. The "rolling-upgrade" for module 2 requires a second "slc" to be hit-less.
- C. Module 3 is an IPS-8 card, which does not support non-disruptive downgrades.
- D. Nodule 3 is an IPS-8 and the switch does not have a second IPS-8 card for route diversity which could provide a "stable" upgrade.
- E. No reason – the upgrade is non-disruptive and hit-less.

Answer: C

Question: 3

**Which methods can be used to control Iscsi INITIATOR ACCESS TO VIRTUAL TARGETS?  
(Select three.)**

- A. Zoning
- B. Specifying on which Gigabitethernet port the virtual target is advertised.
- C. Setting up Iscsi PROXY MODE FOR THE INITIATORS
- D. Specifying which IP subnet virtual target can be accessed
- E. Enabling role-based access control.

Answer: A

Question: 4

**In a scenario with three ISLs between two switches, a single host in VSAN 5 on switch A, and a single storage device on switch B in the same VSAN. What would be the effect on the ISLs if Flow based load balancing option was enabled in VSAN 5?**

- A. Each subsequent frame will use the least utilized link, based on FCC.
- B. Each subsequent frame will use a different link.
- C. All frames between source and destination would follow same link for given flow.
- D. Flow based load balancing is not enabled for an individual VSAN.

Answer: C

Question: 5

**Which organization produce standards related to SCSI, Fiber Channel or Fiber Channel protocol? Select two.**

- A. SNIA
- B. T11 Committee
- C. Cisco Systems
- D. T10 Committee
- E. T12 Committee

=> T11 for fiber channel, T10 for SCSI

Answer: B, D

Question: 6

**What is the User-specified VSAN Ids range?**

3

- A. 1-4093
- B. 2-4093
- C. 2-4094
- D. 2-4092

=> user-specific VSAN 2-4093

Answer: B

Question: 7

**What can be configured on a FCIP Profile?**

- A. Max and Min bandwidth, peer-info, compression ratio
- B. Passive mode, peer-info, compression ratio
- C. TCP port number, sack-enable, Max and Min bandwidth
- D. Sack-enable, TCP port number peer-info
- E. TCP port number, write accelerator compression ratio

Answer: C

Question: 8

**A Brocade 12000 in its native corePID mode (1) is connected to VSAN 1009 on an MDS. What is the correct output of the "show vsan 1009" command?**

- A. vsan 1009 information: Name: VSAN 1009 state:active Interoperability mode:default loadbalancing:src-id/dst-id/oxid Operational state:up.
- B. vsan 1009 information: Name: VSAN 1009 state:active Interoperability mode:1 loadbalancing:src-id/dst-id/oxid Operational state:up.
- C. vsan 1009 information: Name: VSAN 1009 state:active Interoperability mode:2 loadbalancing:src-id/dst-id/oxid Operational state:up.
- D. vsan 1009 information: Name: VSAN 1009 state:active Interoperability mode:3 loadbalancing:src-id/dst-id/oxid Operational state:up.
- E. vsan 1009 information: name: VSAN 1009 state:active Interoperability mode:Brocade Native loadbalancing:src-id/dst-id/oxid Operational state:up.

Answer: D

Question: 9

**What TCP feature reduces the chances of oversized IP packets from being fragmented?**

- A. SACK

- B. Extended ping
- C. PMTU
- D. Retransmit timeout
- E. Send buffer size

Answer: C

Question: 10

**There are two 2 Gbps FC links, 2Gbps ISLs port formed into a single port channel connecting two switches together. What is the initial FSPF cost and resulting FSPF cost of the port channel if ISLs failed and one of the FC links becomes inoperable?**

- A. 250:500
- B. 250:250
- C. 500:250
- D. 500:500
- E. 1000:1000

Answer: B

Question: 11

**What statement is NOT correct depending on the below output:**

**MDS\_switch#show iscsi virtual-target configured Target Seagate-jbod-lun \*Port WWN 21:00.00.04:cf:db:3e:a7 Configured node No of LU mapping:1 ISCSI LUN :0x0000,FC LUN:0X0000 No of advertised interface: 1 GigabitEthernet 2/5 No of initiators permitted: 1 Initiator 10.48.69.241/32 is permitted All initiator permits is disabled**

- A. Interface iscsi 2/5 is in “no shut” status.
- B. Both the discovery and the target sessions exist for this iscsi connection.
- C. Iscsi target has been statically configured
- D. Only one initiator can connect to this target.
- E. Virtual target name is configured as “Seagate-jbod-lun: in the switch configuration.

Answer: B

Question: 12

**What statement is true?**

- A. R\_RDY is used for buffer-to buffer flow control and ACK\_1 frames are used to perform end-to-

end flow control.

B. R\_RDY is used for buffer-to buffer flow control and ACK\_0 frames are used to perform end-to-end flow control.

C. R\_RDY is used for buffer-to buffer flow control and ACK\_0 and ACK\_N frames are used to perform end-to-end flow control.

D. VC\_RDY is used for buffer-to buffer flow control and ACK\_0 frames are used to perform end-to-end flow control.

E. Class F only uses buffer-to buffer flow control.

Answer: A

Question: 13

**To ensure FCID persistency is persistent, what needs to be configured?**

A. Static VSAN ID

B. Static port ID

C. Static FC\_ID

D. Static port map

E. Static Domain ID

Answer: E

Question: 14

**What parameter does not need to be compatible for a port-channel to come p between 2 switches?**

A. Trunk mode

B. Speed

C. Port VSAN

D. Port allowed VSAN list

E. Port set to (PC) or port-channel mode

Answer: E

Question: 15

**A fabric Zone Merge Failure between fabric A and fabric B will result if:**

A. The active zone set in both fabric A and fabric B is an exact match before the merge it attempted.

B. The active zone set in fabric A has more zones than the active zone set in fabric B.

- C. A zone in fabric A contains 3 members, while the same zone name in fabric B contains 4 members.
- D. Zone names used in fabric A are 10 characters, while the zone names in fabric B contain less than 10 characters.
- E. None of the above.

Answer: C

Question: 16

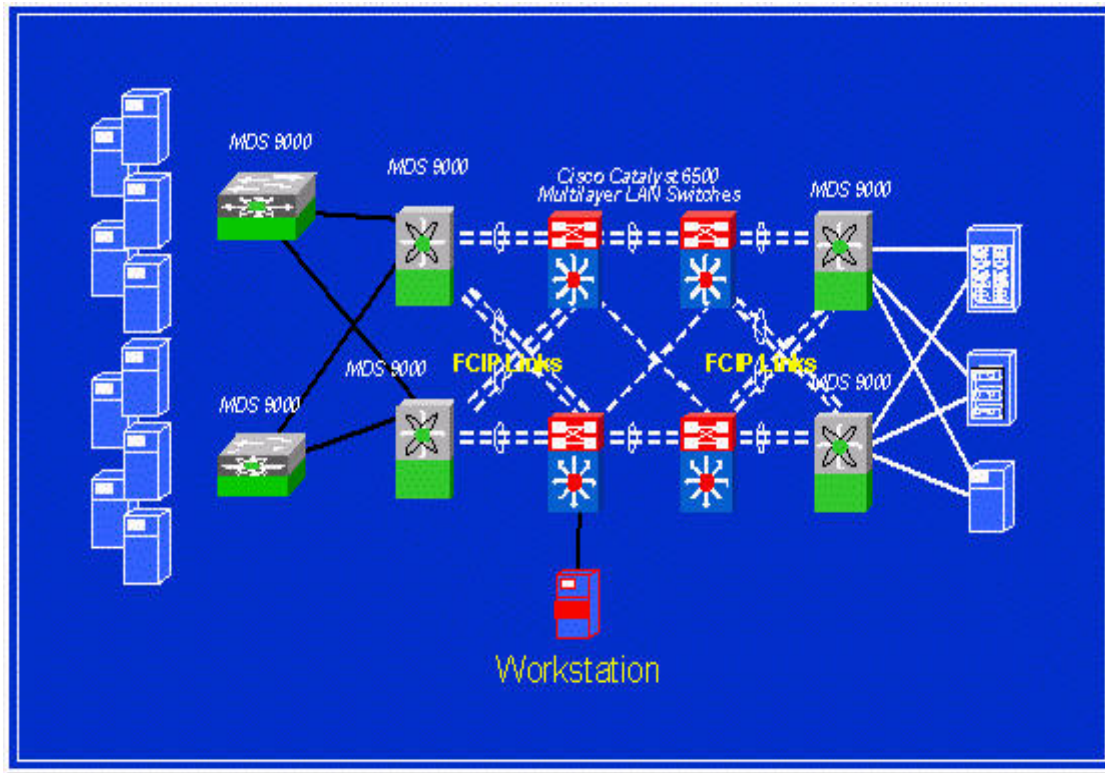
**While in configuration mode, what command will allow a user to view nterface 4 on module 2 without leaving the current mode?**

- A. "exit" then "port show 4 module 2"
- B. "do show interface <type>2/4"
- C. "session show interface <type>2/4"
- D. "show mod 2 int 4"
- E. None of the above – It is not possible to show the interface without ending onfiguration mode.

Answer: B

Question: 17





Assume that all the Cat6Ks in the exhibit above are connected to the MDS 9000 IPS blades and the workstation in the picture is connected to the same Cat6k network. Can the workstation act as a management station for the MDS 9000s?

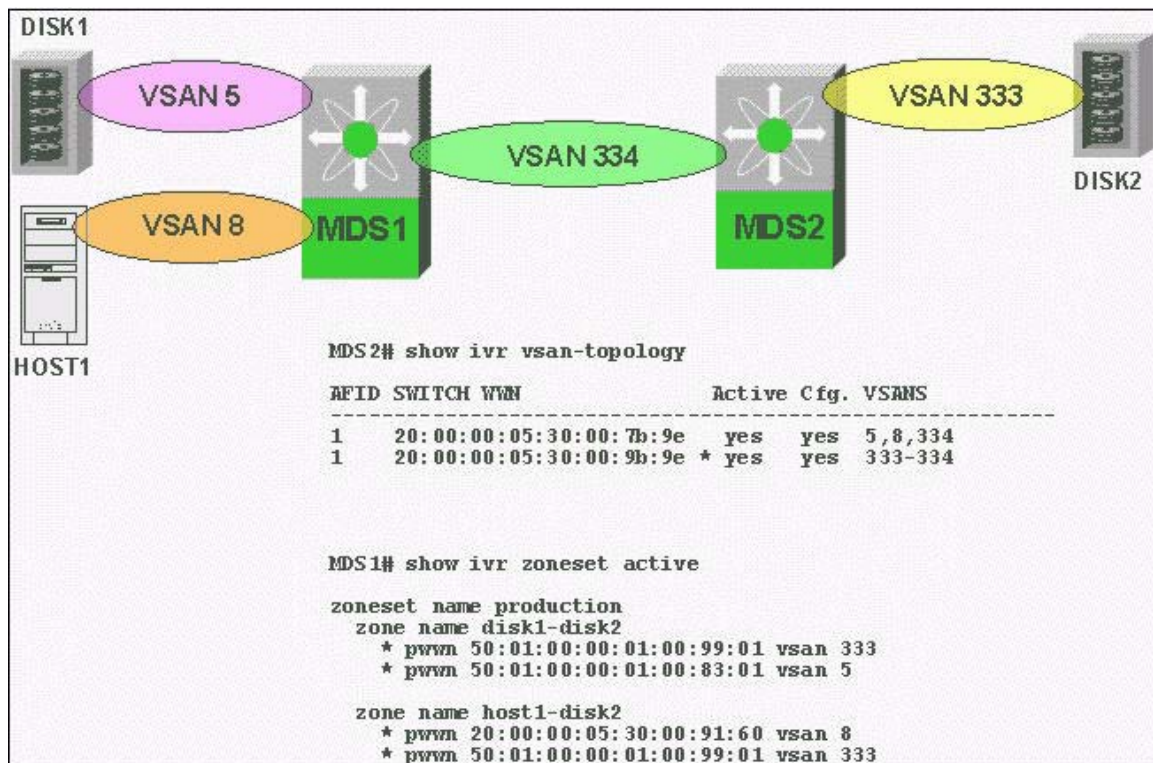
- A. Yes, because it has IP connectivity to the MDS 9000 through the FCIP endpoints onfigured on the MDS 9000s (through the Gigabit Ethernet interfaces on the IPS odules)
- B. Yes, but only if IPFC is configured as well on the MDS 9000 switches
- C. No, the TCP/IP traffic is terminated on the IPS blade itself, so the workstation ould not be able to communicate with the MDS 9000 supervisors to be able to anage them.
- D. Yes, but only if IVR is configured on the MDS 9000
- E. Yes, if the VLAN configuration on the Cat6k matches the VSAN configuration on he MDS 9000, and the Workstation is configured as part of the management LAN.

Answer: C

Question: 18

The configured domain ID for VSAN 8 was changed from 0x30 to 0x97 and fcdomain was then restarted with the command, fcdomain restart disruptive vsan 8.VSAN 8 was then changed to interop mode 1. What statement is true?

8



- A. I/O between host1 – disk2 was disrupted. I/O between disk1 – disk2 was not disrupted.
- B. I/O between disk1 – disk2 and host1 – disk2 was disrupted.
- C. I/O between host1 – disk2 is down until vsan 333 is also configured for interop mode 1.
- D. I/O between host1 – disk2 is down until the ivr zoneset is reactivated.
- E. I/O between host1 – disk2 is down until the ivr vsan topology is reactivated.

Answer: A

Question: 19

**What is true about MDS FCIP Profiles?**

- A. The Profile Ids must match the FCIP interface ID.
- B. Only one FCIP interface per profile.
- C. FCIP profile contains the assigned IP interface for which it is bound to.
- D. FCIP profile is not required if only one FCIP interface is used.
- E. FCIP Profile is assigned to a GIGE interface.

Answer: C

Question: 20

**How ISCSI protocol health and status can be best determined?**

- A. Span the ISCSI interface and use PAA to view ISCSI PDU.
- B. Use the Monitor function of the Device manager.
- C. Attach to IPS module and do <sh ips iscsi stats detail>
- D. From CLI enable prompt do <sh ips iscsi stats detail>
- E. From CLI enable prompt do <Show Iscsi STATS DETAIL>

Answer: B

## Question: 21

**What command can be used to find the first available FICON port number to bind to a newly created port-channel on an MDS 9120 switch?**

- A. Show port-channel database
- B. Show ficon next-available port-number
- C. Show ficon first-available port-number
- D. It is not possible to configure FICON on the MDS 9120 switch.
- E. Port-channel carrying FICON VSANs are not bound to a FICON port number the physical links making up the port-channel already have FICON port numbers.

Answer: C

## Question: 23

**What statement is true?**

- A. ISL can not link a VSAN between two MDS switches.
- B. EISL frames have an additional header.
- C. ISL can not be in a Port Channel.
- D. EISL can not be in a Port Channel.
- E. ISL can only pass VSAN 1.

Answer: B

## Question: 24

**What statement is true with regards to VSANs and zones?**

- A. Zones limit unicast, multicast, and broadcast traffic.
- B. Routing, naming and zoning protocols are not available on a per VSAN basis.
- C. Zones enforce membership only at the source and destination ports.
- D. Zones enforce membership at each E port, source port, and destination ports.

E. None of these statements are true.

Answer: C

Question: 25

**Which prerequisites must be configured before enabling FICON?**

- A. Fabric Binding Persistent FCID Static Domain ID
- B. Fabric Binding Static Domain ID
- C. Fabric Binding In Order Delivery Static Domain ID
- D. Static Domain ID In Order Delivery
- E. Persistent FCID Static Domain ID

Answer: C

Question: 26

**What port types are required to be configured on the switches in this network for proper use of SPAN and monitor traffic flow from host to storage array?**

- A. ST port on switchA and a SD port on switchB
- B. SD port on switchA and a ST port on switchB
- C. SD port on both switchA and on switchB
- D. Span port on switchA and a TE port on switchB
- E. ST port on both switchA and switchB

=> ST port on switch A and a SD port on switch B

Answer: A

Question: 27

**You have a MDS9509 switch with a 16 port FC module in slot 1, an 8 port IPS module in slot 2, and a 32 port FC module in slot 3. What is the FICON port number of interface FC 3/1?**

- A. 11
- B. 10
- C. 41
- D. 40
- E. 20

=> FICON port number of interface FC3/1 : 0x40

Answer: D

Question: 28

**The acronym CUP refers to:**

- A. Control Unit Port – the physical port to the switch that the storage is attached.
- B. Channel Unit Port – the physical port in the switch that connects to the mainframe.
- C. Channel Unit Port – a logical port in the switch used to enable management from the mainframe
- D. Control Unit Port – a logical port in which the switch is used to enable management from the mainframe.
- E. Control Unit Port – the port used to access the storage when multiple paths exist.

Answer: C

Question: 29

**An attaching host acquires a Fiber Channel ID in the accept from what process?**

- A. FLOGI
- B. PLOGI
- C. LOGIN
- D. PRLI
- E. BA\_ACC

**=> acquires a FCID in the accept from FLOGI**

Answer: A

Question: 30

**You connect 2 switches together with an ISL. Which frames would be used for negotiations between the 2 E\_Ports? (Select two.)**

- A. ELP
- B. ESC
- C. PLOGI
- D. FLOGI
- E. PRLI

Answer: A, B

Question: 31

**What is the general timer for missing events within a sequence?**

- A. Connection Request Time –out
- B. Error Detect Time –out
- C. Resource Allocation Time –out
- D. Receiver – Transmitter Time –out
- E. Missing Events Time –out

Answer: B

Question: 32

**What is the purpose of the open fiber control system?**

- A. It defines the flow control mechanism for Fiber Channel.
- B. It defines the mechanism in which Fiber Channel switches communicate with Gbics.
- C. It defines a safety mechanism for SW laser data links.
- D. It defines the distance limitation for different types of lasers.
- E. It specifies the maximum bit error rate for Fiber channel links.

=> the purpose of the open fiber control system : it defines the safety mechanism for SW laser data links

Answer: C

Question: 33

**What LUN is used when a host issues a SCSI CDB Report LUNs query to a target?**

- A. One query with LUN 0 only
- B. One query with LUN 1 only
- C. One query with all LUNs which are allowed to be accessed by host
- D. Single query for each LUN that is allowed to be accessed by host
- E. No LUN number field in "Report LUNs" query

=> SCSI CDB Report LUNs query

Answer: A

Question: 34

**What switch Fabric internal Link services (SW\_ILS) command indicates if the FCIP connection is a E-Port or a B-Port?**

- A. ESC
- B. EFP

- C. ELP
- D. LSU
- E. EPP

=> ELP for indicating B-port or E\_port

Answer: C

Question: 35

**What set of Primitive signals are valid for a arbitrated loop?**

- A. NOS, LOS, LR, LRR
- B. SOF, EOF, ABTS, ACK
- C. LIFA, LIPA, LIHA, LISA
- D. LIP, LR, LRR, SOF
- E. R\_RDY, CL, OPN, ARB

=> primitive signals for valid arbitrated loop : R\_RDY, CL, OPN, ARB

Answer: E

Question: 36

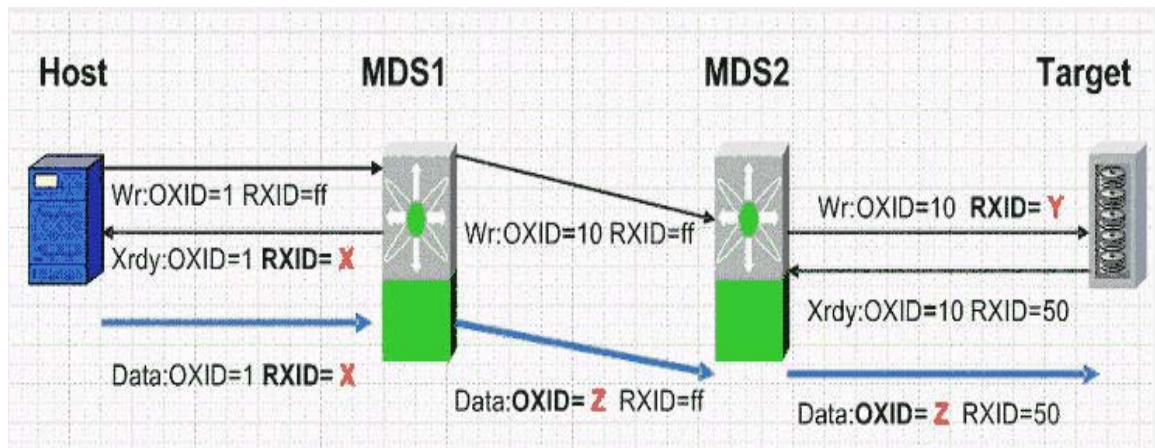
**Read only zones on MDS switches are implemented using:**

- A. SCSI I/O operation type
- B. LUN masking
- C. LUN mapping
- D. LUN binding
- E. LUN trespass

=> read only zones : SCSI I/O operation type

Answer: A

Question: 37 Exhibit:



Assume that FCIP write accelerator has been enabled between MDS1 and MDS2. What will be the X,Y,Z value respectively?

- A. X = 50, Y = 10, Z = 10
- B. X = 50, Y = ff, Z = 10
- C. X = 10, Y = ff, Z = 10
- D. X = ff, Y = ff, Z = 1
- E. X = 10, Y = 50, Z = 10

Answer: C

Question: 38

In Iscsi proxy mode, host iscsi initiators can be differentiated by: (Select two.)

- A. Static PWWN assigned by MDS
- B. Static PWWN assigned by MDS administrator
- C. IQN name of the iscsi initiator
- D. IP address of the iscsi initiator
- E. E.164 address of the iscsi initiator

Answer: C, D

Question: 39

Which methods can be used to control access of Fiber Channel attached targets to iscsi Hosts on a MDS switch? (Select three.)

- A. Zoning
- B. VSANs



- C. IP MASK
- D. User Roles
- E. Isns

=> access control of FC target to iSCSI hosts

Answer: A

## Get Full Version of Exam 350-040 PDF Q&A

techeXams presents authentic, genuine and valid study material, which promise 100% success in very first attempt. To take optimal results for 350-040 exam, you need to buy full version of 350-040 question and answer. An average of approximately 10 to 15 hours should be spent to study these exam questions and you will surely pass your exam. So come join us and quench your thirst for knowledge.

**Get complete 350-040 questions and answers by visiting URL**

**<http://www.techexams.ws/exams/350-040.do>**