



642-072

(Cisco Unity Design and Networking (CUDN))

Document version: 1.04.11

Important Note About 642-072 PDF

techeXams' **642-072 PDF** is a comprehensive compilation of questions and answers that have been developed by our team of certified professionals. In order to prepare for the actual exam, all you need is to study the content of this exam questions. An average of approximately 10 to 15 hours should be spent to study these exam questions and you will surely pass your exam. It's our guarantee.

Copyright

techeXams holds the copyright of this material. techeXams grants you a limited license to view and study this material, either for personal or commercial use. Unauthorized reproduction or distribution of this material, or any portion thereof, may result in severe civil and criminal penalties, and will be prosecuted to the maximum extent possible under law.

Disclaimer

Neither this guide nor any material in this guide is sponsored, endorsed or affiliated with any of the respective vendor. All trademarks are properties of their respective owners.

Question: 1

A customer has Cisco Unity installed in a distributed call-processing configuration. At their remote location, one of their two Cisco Unity Unified Messaging servers experiences a catastrophic failure. Your customer wants to use the recent Cisco Unity Disaster Recovery Tool backup to restore the failed server user database to the functioning Cisco Unity server. What do you tell the customer?

- A. This will work only if the user database does not exceed 7500 users on the functioning server.
- B. This will work if all the user Exchange aliases are unique.
- C. The Disaster Recovery Tool will restore only to the default Cisco Unity database.
- D. VERITAS Backup Exec must be used in this scenario.

Answer: C

Question: 2

You have completed the low-level design definition document. What is the next document step in the process?

- A. logical site survey
- B. physical site survey
- C. implementation plan
- D. Bill of Materials

Answer: C

Question: 3

Some Cisco Unity Unified Messaging users complain that they cannot make a TRaP connection when attempting to play and record messages through their desktops. What is a possible cause of this?

- A. A firewall separates these users from Cisco Unity.
- B. These users are not licensed for Unified Messaging.
- C. These users need to have their Exchange mailboxes modified to allow access.
- D. The Cisco Unity server does not have a sufficient number of Unified Messaging licenses.

Answer: A

Question: 4

You are beginning the Cisco Unity design process with your customer. Which worksheet template do you use first?

- A. initial customer requirements
- B. preliminary customer requirements interview
- C. external customer requirements
- D. internal customer requirements

Answer: D

Question: 5

The Grant Unity Access utility is used when subscribers have authentication issues using the Cisco Unity Inbox in which Cisco Unity configuration?

- A. all Unified Messaging configurations
- B. all voice-mail-only configurations
- C. voice-mail-only configurations when Cisco Unity is installed in the existing forest/domain
- D. voice-mail-only configuration when Cisco Unity is installed in a new forest/domain

Answer: C

Question: 6

The Cisco Unity Internet Voice Connector performs which task on incoming VPIM messages?

- A. sets the address type to VOICE
- B. converts the message to MAPI format
- C. routes messages to the UOmni mailbox
- D. converts voice attachments to the G.729a audio format

Answer: B

Question: 7

Your customer is almost finished migrating from a Cisco Unity interoperability system with an Octel solution. They have a technician on-site to replace another Octel node with a Cisco Unity server. The customer calls and asks what tool you used last time to add all the Bridge subscribers from an Excel file, and where it is. Select the utility name and location.

- A. Bulk Import in the Commserver/Techtools folder
- B. Migrate Subscriber Data tool in Tools Depot

- C. Migrate User Import utility in Tools Depot
- D. Bridge User Import in the Commserver/Bridge Migrations folder

Answer: B

Question: 8

The Interop Gateway service is configured to run on which server or servers in an interoperability scenario?

- A. IBM Lotus Domino server or servers with Cisco Unity users
- B. all Cisco Unity servers in the IBM Lotus Domino configuration
- C. the Cisco Unity Bridgehead server in the IBM Lotus Domino configuration
- D. IBM Lotus Domino servers where the DUC is installed

Answer: C

Question: 9

You are attempting to manage subscribers on other Cisco Unity servers. When you attempt to connect, you are denied access. What is the probable cause?

- A. You can use only Terminal Services for this function.
- B. You do not have permissions and must run the Grant Unity Access utility.
- C. You cannot manage Cisco Unity servers located outside your dialing domain.
- D. The Cisco Unity server you are attempting to reach has the Cisco Security Agent for Unity installed.

Answer: B

Question: 10

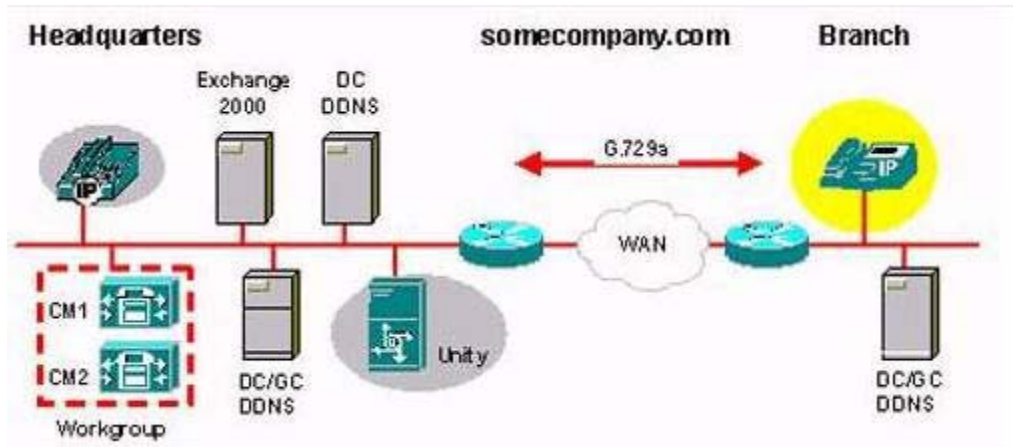
You are conducting a physical site survey. What two items require data collection? (Choose two.)

- A. Are there any messaging servers on site?
- B. How many managers are on site?
- C. How many users are on site?
- D. How many offices are on site?
- E. What type of work is done on site?

Answer: A, C

Question: 11

Refer to the exhibit.



A company has a remote branch with 50 telephones. There are no hardware transcoders on the routers. With the configuration as presented, which statement is true about codec use on the Cisco Unity?

- A. Cisco Unity should be set to use G.729a.
- B. Cisco Unity should always use G.711 for messages.
- C. Cisco Unity should use G.729a for messages and G.711 for prompts.
- D. Cisco Unity codec must always be matched to Cisco Unified CallManager in centralized messaging deployments.

Answer: A

Question: 12

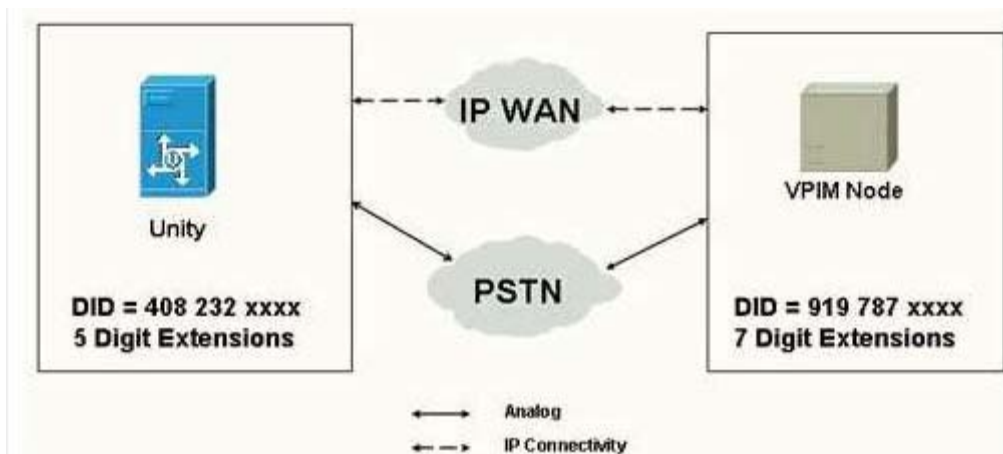
Your customer has asked you about changes necessary to their circuit-switched PBX to accommodate the upcoming Cisco Unity Unified Messaging installation. Their telephone system will use a PIMG integration to Cisco Unity. Other than possibly requiring software reconfiguration on the telephone system and the installation of the PIMGs, what do you tell the customer?

- A. The telephone system requires enough analog line cards to support the gateway units.
- B. Voice boards must be installed in the Cisco Unity platform.
- C. The gateway must be physically close to the Cisco Unity for the RS-232 cable to reach.
- D. Digital phone ports are required in the telephone system to support the gateways.

Answer: D

Question: 13

Refer to the exhibit.



Your company needs to exchange voice messages with a supplier using VPIM. You are asked to provide dial by name” and you want to maintain your internal 5-digit dialing plan. You add VPIM subscribers using a 5-digit extension and a 5-digit remote mailbox number. Because the voice-mail system of your supplier supports only blind addressing, they want to use the full DID number to send messages to you.

Which prefix should be configured in Cisco Unity server VPIM delivery location?

- A. Cisco Unity Prefix=23
- B. Cisco Unity Prefix=40823
- C. Remote Cisco Unity Prefix=78
- D. Remote Cisco Unity Prefix=91976

Answer: D

Question: 14

Your customer developed a preliminary Bill of Materials for a Cisco Unity voice-mail-only installation for their two locations. They will create a new forest/domain (VM.com) and use off-box Exchange message stores. Their Bill of Materials shows two Exchange servers and two Cisco Unity servers. They plan on using the domain controllers/global catalog servers in their existing domain for authentication. What do you tell the customer?

- A. Cross-box authentication must be enabled on the Cisco Unity server.
- B. The Bill of Materials is accurate.
- C. A domain controller/global catalog is needed in VM.com

D. The customer should use on-box Exchange message store.

Answer: C

Get Full Version of Exam 642-072 PDF Q&A

techeXams presents authentic, genuine and valid study material, which promise 100% success in very first attempt. To take optimal results for 642-072 exam, you need to buy full version of 642-072 question and answer. An average of approximately 10 to 15 hours should be spent to study these exam questions and you will surely pass your exam. So come join us and quench your thirst for knowledge.

Get complete 642-072 questions and answers by visiting URL

["http://www.techexams.ws/exams/642-072.do"](http://www.techexams.ws/exams/642-072.do)