



642-355

(Cisco Storage Networking Solutions Design Specialist)

Document version:1 04 11

Important Note About 642-355 PDF

techeXams' **642-355 PDF** is a comprehensive compilation of questions and answers that have been developed by our team of certified professionals. In order to prepare for the actual exam, all you need is to study the content of this exam questions. An average of approximately 10 to 15 hours should be spent to study these exam questions and you will surely pass your exam. It's our guarantee.

Copyright

techeXams holds the copyright of this material. techeXams grants you a limited license to view and study this material, either for personal or commercial use. Unauthorized reproduction or distribution of this material, or any portion thereof, may result in severe civil and criminal penalties, and will be prosecuted to the maximum extent possible under law.

Disclaimer

Neither this guide nor any material in this guide is sponsored, endorsed or affiliated with any of the respective vendor. All trademarks are properties of their respective owners.

Question: 1

Which technology should be used to provide transparent low latency FC transport across a metropolitan area?

- A. DWDM
- B. FCIP
- C. iSCSI
- D. iFCP

Answer: A

Question: 2

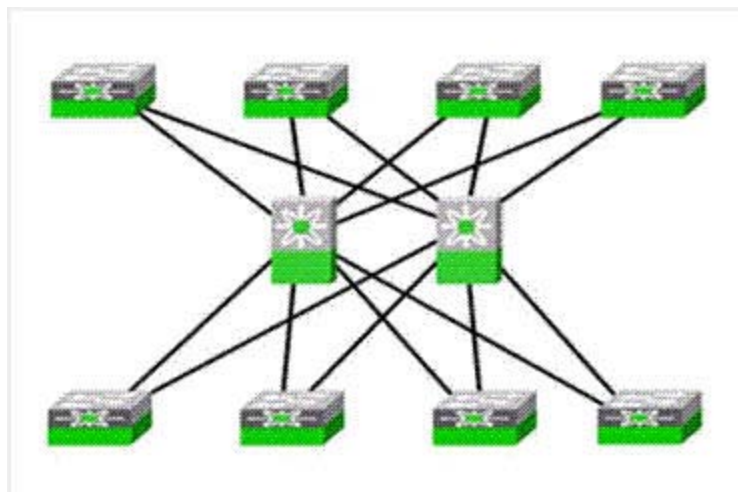
Which statement is true concerning the Cisco MDS switch when operating in native interop mode?

- A. The MDS switch can interoperate with Non-MDS switches that are certified by SNIA.
- B. The MDS switch can interoperate with Non-MDS switches that support "MDS Native" mode.
- C. The MDS switch can interoperate with Non-MDS switches that properly adhere to Fibre Channel switch standards.
- D. The MDS switch cannot interoperate with Non-MDS switches.

Answer: C

Question: 3

Your customer has an existing SAN with eight edge switches and two core switches.



In your detailed assessment, which metric will help you convince the customer to consider an alternative, more highly available topology?

- A. SFP characteristics
- B. total portcount
- C. cost of edge switch devices
- D. total versus usable ports for end devices

Answer: D

Question: 4

A customer would like to add Cisco MDS switches to an existing Brocade environment with minimal disruption. The Brocade switches are using PID-0 mode. Which two features will enable the creation of a Cisco-Brocade heterogeneous fabric without restricting the feature set of either switch? (Choose two.)

- A. interop mode 1
- B. interopmode2
- C. interopmode3
- D. IVR
- E. PortChannels
- F. CWDM

Answer: B, D

Question: 5

Your customer has a number of data storage requirements:

servers are not responsible for volume management or data migration storage is provisioned in real time legacy and heterogeneous storage assets can be consolidated and fully utilized data can be protected using simplified snapshot and replication techniques data can be assigned to different classes easily. Which solution would meet these requirements?

- A. VSANs
- B. Wide-Area Application Services (WAAS)
- C. fabric-based virtualization
- D. LUN zoning
- E. host-based virtualization

Answer: C

Question: 6

Select three advantages of using fabric-based storage virtualization instead of host-based virtualization. (Choose three.)

- A. offers a single point of management
- B. supports heterogeneous storage
- C. does not require a host agent
- D. insulates the hosts from storage changes
- E. provides mirroring

Answer: A, C, D

Question: 7

Which are two characteristics of the Cisco MDS Series fan modules? (Choose two.)

- A. Supervisor modules shut down the fan modules when the air temperature is below a preset threshold.
- B. If the Fan Status LED turns red, a fan has failed and the module must be replaced.
- C. Fan modules monitor air temperature and shut down if the temperature exceeds a preset threshold.
- D. Fan modules do not require the switch to be powered off in order to be replaced.

Answer: B, D

Question: 8

Your customer is using an IPS-8 module in its data center to provide FCIP connectivity to 20 remote sites. It has encountered connectivity problems at four of the remote sites. After investigating, the customer's network administrator found that the IPS-8 is sending 2300-byte packets, but the receiving switches at the four remote sites do not support jumbo frames.

What should you do?

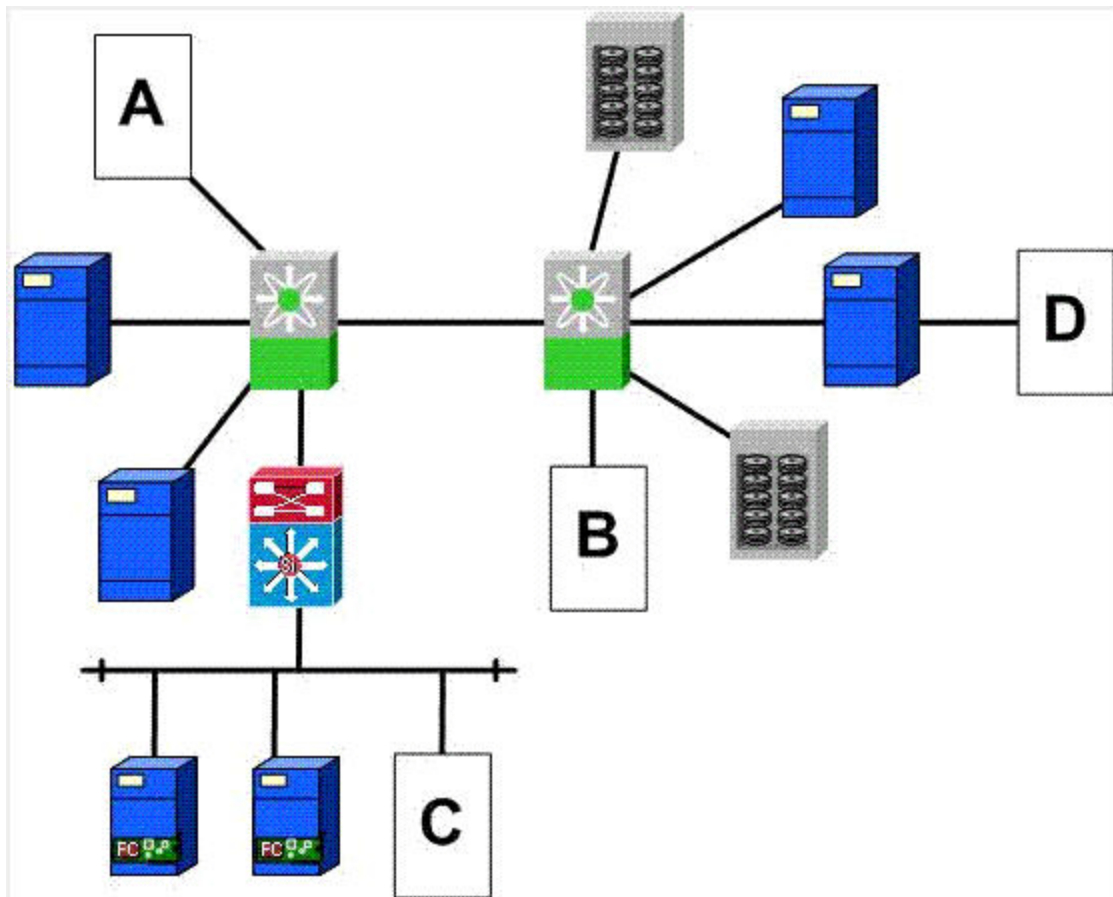
- A. Disable packet shaping on the IPS-8
- B. Reduce the minimum retransmit timeout
- C. Disable jumbo frames on the IPS-8
- D. Enable Path MTU discovery

Answer: D

Question: 9

4

A customer plans to add a tape backup subsystem to its existing storage network.



In which location should the customer place the tape backup device in order to provide the best performance during backup and recovery?

- A. A
- B. B
- C. C
- D. D

Answer: B

Get Full Version of Exam 642-355 PDF Q&A

techeXams presents authentic, genuine and valid study material, which promise 100% success in very first attempt. To take optimal results for 642-355 exam, you need to buy full version of 642-355 question and answer. An average of approximately 10 to 15 hours should be spent to study these exam questions and you will surely pass your exam. So come join us and quench your thirst for knowledge.

Get complete 642-355 questions and answers by visiting URL

<http://www.techexams.ws/exams/642-355.do>