



642-652

(Wide Area Application Services for Field Engineers)

Document version:1 04 11

Important Note About 642-652 PDF

techeXams' **642-652 PDF** is a comprehensive compilation of questions and answers that have been developed by our team of certified professionals. In order to prepare for the actual exam, all you need is to study the content of this exam questions. An average of approximately 10 to 15 hours should be spent to study these exam questions and you will surely pass your exam. It's our guarantee.

Copyright

techeXams holds the copyright of this material. techeXams grants you a limited license to view and study this material, either for personal or commercial use. Unauthorized reproduction or distribution of this material, or any portion thereof, may result in severe civil and criminal penalties, and will be prosecuted to the maximum extent possible under law.

Disclaimer

Neither this guide nor any material in this guide is sponsored, endorsed or affiliated with any of the respective vendor. All trademarks are properties of their respective owners.

Question: 1

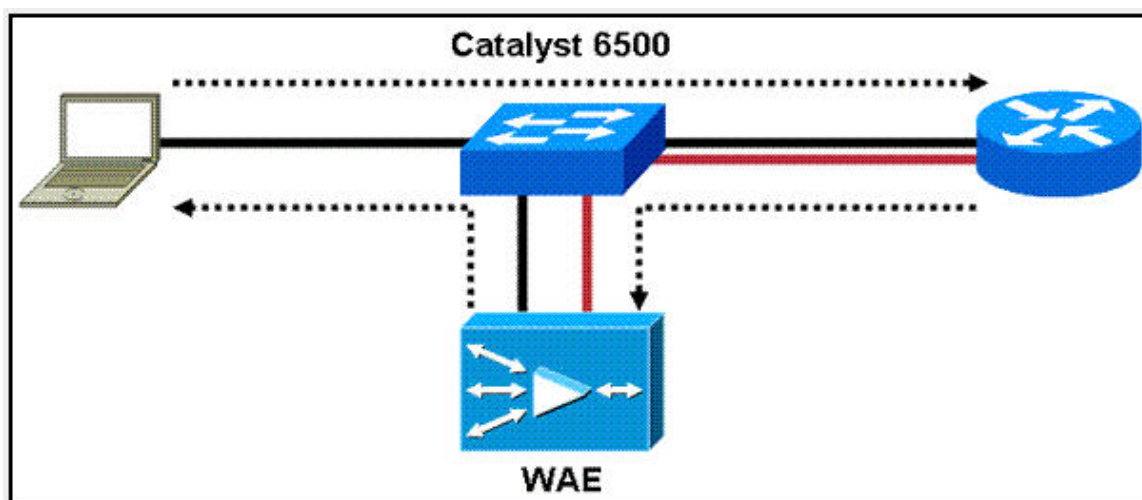
After configuring a Cisco WAAS deployment using WCCPv2, you find that you can successfully ping a data center server from a workstation in the branch office. However, when you attempt to start one of the optimized applications, the application cannot communicate with the server. What is the most likely cause?

- A. There is insufficient disk space on either the edge or core WAE.
- B. You configured half-duplex mode on the WAE interfaces.
- C. You configured auto negotiate duplex mode on the WAE interfaces.
- D. You deployed the WAE on the same subnet as the users or servers.

Answer: D

Question: 2

Your customer plans to deploy the edge WAE appliances in an off-path, two-arm configuration.



The WAE appliances are connected to Cisco Catalyst 6500 Series Switches and use WCCPv2 for traffic interception. The customer wants to minimize the latency added by interception. The customer also wants to know if Layer 2 redirection, rather than GRE tunnels, will improve performance. What should you tell your customer?

- A. Layer 2 redirection can be used only in in-path configurations.
- B. Layer 2 redirection can be used only in one-arm configurations.
- C. Layer 2 redirection can be used in the customer configuration.
- D. GRE tunnels provide better performance than Layer 2 redirection.

Answer: C

Question: 3

When implementing Windows authentication for WAE management, what is the maximum allowable time skew between each WAE and the Windows domain controller?

- A. 1 second
- B. 5 seconds
- C. 120 seconds
- D. 300 seconds

Answer: D

Question: 4

Your customer plans to implement Cisco WAAS using four WAE appliances in a load-balanced configuration. Which feature must be supported on the switches to which the WAE appliances are attached?

- A. Redirect exclusion
- B. Layer 2 redirection
- C. WCCPv2
- D. WCCPv2 or PBR

Answer: C

Question: 5

Your customer has deployed Cisco WAAS using ACE for traffic interception. The customer reports that traffic is not being optimized. Which command would you use to troubleshoot network interception?

- A. WAE-CORE# show wccp routers
- B. WAE-CORE# show ip access-lists
- C. ACE/Admin# show wccp routers
- D. ACE/Admin# show rserver detail
- E. Router# show wccp services

Answer: D

Question: 6

What are two possible reasons the CORE1 WAE might be displayed as “Online”? (Choose two.)

Device Name	Services	IP Address	CMS Status	Device Status
CM1	CM (Primary)	10.10.10.10	Online	
CM2	CM (Standby)	10.10.10.11	Online	
CORE1	Core	2.2.2.2	Offline	
EDGE-NM	Edge	10.10.100.2	Online	
EDGE1	Edge	1.1.1.2	Online	

- A. The WAE is powered off.
- B. The HTTPS service is disabled.
- C. The Central Manager service is disabled.
- D. The WAE is configured in the same VLAN as the server nodes.

Answer: A, C

Question: 7

Your customer reports that traffic has never been received by the remote device after deploying Cisco WAAS using WCCPv2 in an off-path configuration. Which two parameters should you verify? (Choose two.)

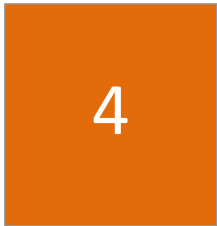
- A. IP SLAs
- B. WAE subnet
- C. Router IP address
- D. Routing configuration
- E. Service group redirection

Answer: B, E

Question: 8

This partial listing shows output from the show tfo connection summary command.

```
Local-IP:Port Remote-IP:Port ConId PeerId Policy
10.10.13.100:3826 10.10.10.100:80 34755 00:11:25:aa:c1:e8 L,F,L,L
```



Given this output, which statement is correct?

- A. The local WAE policy was configured for LZ compression only; the remote WAL policy was configured for full optimization.
- B. The local WAE policy was configured for LZ compression and TFO optimization; the remote WAE policy was configured for LZ compression only.
- C. Both the local and remote WAE policies were configured for LZ compression only.
- D. Both the local and remote WAE policies were configured for LZ compression and TFO optimization, but only LZ compression was applied.

Answer: A

Get Full Version of Exam 642-652 PDF Q&A

techeXams presents authentic, genuine and valid study material, which promise 100% success in very first attempt. To take optimal results for 642-652 exam, you need to buy full version of 642-652 question and answer. An average of approximately 10 to 15 hours should be spent to study these exam questions and you will surely pass your exam. So come join us and quench your thirst for knowledge.

Get complete 642-652 questions and answers by visiting URL

["http://www.techexams.ws/exams/642-652.do"](http://www.techexams.ws/exams/642-652.do)