



70-281

(Planning, Deploying, and Managing an Enterprise Project Management Solution)

Important Note About 70-281 PDF

techeXams' **70-281 PDF** is a comprehensive compilation of questions and answers that have been developed by our team of certified professionals. In order to prepare for the actual exam, all you need is to study the content of this exam questions. An average of approximately 10 to 15 hours should be spent to study these exam questions and you will surely pass your exam. It's our guarantee.

Copyright

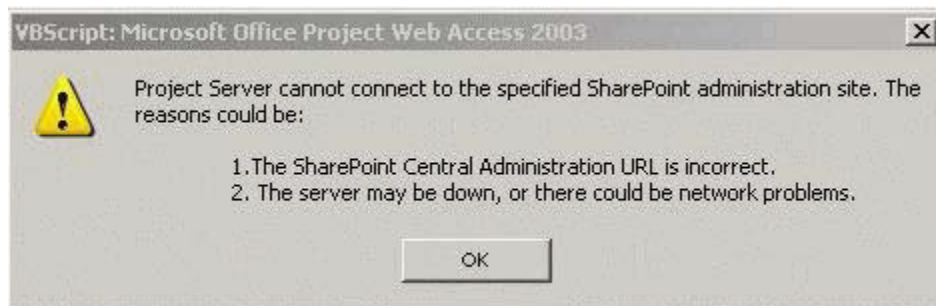
techeXams holds the copyright of this material. techeXams grants you a limited license to view and study this material, either for personal or commercial use. Unauthorized reproduction or distribution of this material, or any portion thereof, may result in severe civil and criminal penalties, and will be prosecuted to the maximum extent possible under law.

Disclaimer

Neither this guide nor any material in this guide is sponsored, endorsed or affiliated with any of the respective vendor. All trademarks are properties of their respective owners.

Question: 1

You are the administrator of the Microsoft Enterprise Project Management solution for Company.com. You deploy Microsoft Office Project Server 2003 in your organization on Company1 in the domain called "Domain1.consoto.com." You choose to set up Microsoft Windows Share Point Services configuration information at a later time. You decide to use an existing instance of Windows Share Point Services for Issues and Risks on Company2 in the domain named "Domain2.adatum.com" which is located in a separate forest that is not trusted. When you attempt to connect the project server installation to use the Windows Share Point Services server, you receive the error message shown in the Exhibit.



You click on the Test Url link to connect to the Microsoft Share Point Central Administration page on Company2. You connect successfully. You need to ensure that project Issues and Risks are available. What should you do?

- A. Create an account in Domain2 named WSSAdmin. Make it a member of the Administrators group. Run PSCOMPLUS.exe on Company1. Use the WSSAdmin account you created for the Windows Share Point Services identity.
- B. Create an account in Domain2 named WSSAdmin. Make it a member of the Administrators group. Run PSCOMPLUS.exe on Company2. Use the WSSADMIN account you created for the Windows Share Point Services identity.
- C. Create an account in Domain1 named WSSAdmin. Make it member of the Administrators group. Create a new Application Pool D identity on Company2. Set the Application Pool to use the WSSAdmin account.
- D. Create an Account in Domain2 named WSSAdmin. Make it a member of the Administrators group. Create a new Application Pool Identity on Company2. Set the Application Pool to use the WSSADMIN account.

Answer: A

Explanation:

There are two places in Microsoft Project Server Setup where you are asked for Windows account information: at the "Enter Analysis Services connection information" page and the "Enter account information for Windows Share Point Services (continued)" page. This account information is used to generate the COM+ packages Microsoft Project Server uses in order to start other processes such as creating OLAP cubes or administering the Share Point server. Thus, it follows that if you want to ensure that project managers can access the Project Server Public Documents site you should run the PSComPlus.exe utility.

Reference:

Microsoft Training and Certification: Microsoft Official Curriculum: Planning, Deploying, and Managing an Enterprise Project Management Solution; Delivery Guide, Course Number 273A, and Module 3: Installing and Configuring Project System Servers, Microsoft Press, Redmond, 2003, p. 1

Question: 2

You are the administrator of Microsoft Office Project Server 2003 for Company.com. You are asked to provide access to your implementation of Project Server to traveling users. These users will connect to the project server by using the Internet to communicate with the project server from their portable computers. The network administrator has locked down these computers to protect network security. You add the project server's Internet address to the list of Trusted Sites on each of the portable computers. You confirm that these users can access the project server from their portable computers while connected to Company.com's network by using Windows domain accounts. These traveling users cannot connect to the project server by using the nternet. By using Microsoft Office Project Web Access, users try to connect to the project server's Internet address. Users see an error message that states, "You are not authorized to view this page." You need to ensure that traveling users can connect to the project server when connecting by using the Internet. What should you do?

- A. Enable Access Data Sources across Domains in the Trusted Sites zone.
- B. Set User Authentication in the Local Internet zone to Automatic Logon in Local Internet zone.
- C. Add the project server's Internet address to the list of sites that are allowed to use Cookies regardless of the settings.
- D. Set User authentication in the Trusted Sites zone to Automatic Logon with Current Name and Password.

Answer: D

Explanation:

If the Project Server URL is not a member of the trusted sites zone, then there could be issues with downloading the controls that let Project Web Access display its data. Make sure that the security settings in Internet Explorer allow for the downloading of signed ActiveX controls. If the security settings in Internet Explorer do not allow it to run ActiveX controls then most views in Project Web Access will not work. Internet Explorer must be able to run ActiveX controls for Project Web Access to work properly. According to the question, the ActiveX controls are allowed to run. Thus, it is a problem of not having the ability to log on to the server via the Internet. Option D provides the solution.

Reference:

Microsoft Training and Certification: Microsoft Official Curriculum: Planning, Deploying, and Managing and Enterprise Project Management Solution; Delivery Guide, Course Number 273 A Module 13: Troubleshooting Project Server 2003, Microsoft Press, Redmond, 2003, p. 21

Question: 3

You are the administrator of Microsoft Office Project Server 2003 for Company.com. You install Microsoft SQL Server 2000 and Analysis Services on Company1. You create valid service accounts with the appropriate permissions. You begin the installation of Project Server on Company2. During installation when you are asked to supply information on Company1, you choose to enter this information later. You decide that your Microsoft Enterprise Program Management solution requires Portfolio Analyzer functionality. You enter and save the Analysis Services and cube name on the Update resource tables and OLAP cube administration page. You need to implement Portfolio Analyzer functionality by using the least administrative effort. What should you do?

- A. Run PSMigrat.exe.
- B. Run ConnInfo.exe.
- C. Run PSComPlus.exe.
- D. Run SetTracing.exe

Answer: C**Explanation:**

There are two places in Microsoft Project Server Setup where you are asked for Windows account information: at the "Enter Analysis Services connection information" page and the "Enter account information for Windows Share Point Services (continued)" page. This account information is used to

generate the COM+ packages Microsoft Project Server uses in order to start other processes such as creating OLAP cubes or administering the Share Point server. Thus, it follows that if you want to implement Portfolio Analyzer functionality by using the least administrative effort, you should run PSComPlus.exe the ConnInfo.exe utility must be used after backing up and restoring the data information. It is also used to point the Project Server front-end server to the new SQL Server. Moreover, this is not what is required.

Reference:

Microsoft Training and Certification: Microsoft Official Curriculum: Planning, Deploying, and Managing and Enterprise Project Management Solution; Delivery Guide, Course Number 273 A Module 3: Installing and Configuring Project System Servers, Microsoft Press, Redmond, 2003,p. 1

Question: 4

You are the administrator of the Microsoft Enterprise Project Management solution for Company.com. Company.com wants to use Microsoft Office Project Server 2003. You plan an initial configuration with Microsoft SQL Server 2000, Analysis Services, Project Server, Session Management, and Views Processing each installed on an individual server. You initial configuration is designed for 500 users. You expect a rapid growth of up to 3000 users of the Enterprise Project Management solution. You want to be able to add additional computing capacity as needed. You have to install the components so that additional server capacity can be added without interrupting computer functioning. What should you do?

- A. Install SQL Server on a single server in a load balancing cluster. Add an additional SQL Server server as needed.
- B. Install Project Server on a single server in a load-balancing cluster. Add an additional IIS as needed.
- C. Install Views Processing on the Session Management server. Start the service as needed.
- D. Install a database for the Analysis Services repository on the SQL Server. Migrate the repository as needed.

Answer: B

Explanation:

Scalability refers to the ability of an application to provide resources to users making many concurrent requests. High scalability is desirable because increases in demand on system resources can then easily be addressed by scaling up or scaling out. Network Load Balancing distributes incoming client requests among the application servers in the NLB group to more evenly balance the

workload of each server and prevent overload on any one server. The NLB cluster appears to client computers as a single, highly scalable and fault-tolerant server. In the question the discussion points to rapid growth which means that scalability is required. You thus need to install Project Server on a single server in a load balancing cluster and add an additional IIS as it becomes necessary.

Reference:

Microsoft Training and Certification: Microsoft Official Curriculum: Planning, Deploying, and Managing and Enterprise Project Management Solution; Delivery Guide, Course Number 273 A Module 2: Planning the Project Server 2003 Infrastructure, Microsoft Press, Redmond, 2003, p.

Question: 5

You are the administrator of Microsoft Office Project Server 2003 for your company. You install Project Server with default settings. You create the initial Enterprise Resource Pool from your Active Directory accounts for users. Company resource planning policy requires that proposed project plans show only the skills needed to complete each task in the proposed project, so resource managers can plan resource allocation. You create a custom Enterprise Resource Outline Code 1 with values that match needed skills. You must configure the Enterprise Project Management solution so that project managers can create proposed project plans in compliance with the company resource planning policy. What should you do?

- A. Open the Enterprise Resource Pool. Assign each resource a value from Enterprise Resource Outline Code 1.
- B. Add Generic resources to the Enterprise Resource Pool that correspond to the values in Enterprise Resource Code 1.
- C. Add Project Server users with Project Server authentication only whose names correspond to the values in Enterprise Resource Outline Code 1.
- D. On the Customize Enterprise Fields dialog box for Enterprise Resource Outline Code 1, select the Use this code for matching generic resources option.

Answer: D**Question: 6**

You are the administrator of the Microsoft Enterprise Project Management solution for Company.com. You install Microsoft Office Project Server 2003, Microsoft SQL Server 2000, and Views Processing on CompanyA. You install Analysis Services on CompanyB. You successfully build an OLAP cube. Management wants project managers to access Portfolio

Analyzer views in Project Server. You have to configure your servers so that project managers can access the Portfolio Analyzer views in Project Server. What should you do?

- A. Add CompanyB to the list of trusted sites on CompanyA.
- B. Add a role to the Portfolio Analyzer cube on CompanyB. Add Everyone to the role.
- C. Configure the MSOLAP virtual directory on CompanyB for Anonymous Access.
- D. Run PSComPlus.exe on CompanyA. Enter a domain administrator account for the OLAP Component Service.

Answer: B

Explanation:

SQL Analysis Services provides the OLAP database and processing capabilities used by Project Server. SQL Analysis Services is required for using the Portfolio Analyzer feature of Project Server. You need to add a role to the Portfolio Analyzer cube on CompanyB and add the everyone group to the role.

Reference:

Microsoft Training and Certification: Microsoft Official Curriculum: Planning, Deploying, and Managing and Enterprise Project Management Solution; Delivery Guide, Course Number 2732A, and Module 2: Planning the Project Server 2003 Infrastructure, Microsoft Press, Redmond, 2003, p. 29

Question: 7

You are the administrator of the Microsoft Enterprise Project Management solution for Company.com. Company.com wants to use Microsoft Office Project Server 2003. You plan to install Microsoft SQL Server 2000 and Analysis Services on CompanyA. You plan to install Project Server and Session Manager on CompanyB. You plan to install the Views Processing service on Company C. You have to prepare the servers to that you can install Views Processing on CompanyC. What should you do?

- A. Add CompanyB to the list of trusted servers on CompanyC.
- B. Create a share for the ViewDrop directory on CompanyB.
- C. Create a domain user called "VPAdmin." Use this VPAdmin account during the setup program on CompanyC.
- D. Run ProxyCfg.exe on CompanyB. Add CompanyC to the list of bypassed server.

Answer: C

Explanation:

When you want to install Views Processing there should be already be logon names, passwords and other configuration requirements that will allow the installation to take place. For this setting up of the requirements, you should have a domain user account. You should use the descriptions prodded during the installation of Project Server 2003 as a guide during the Project Server Setup Wizard.

Reference:

Microsoft Training and Certification: Microsoft Official Curriculum: Planning, Deploying, and Managing and Enterprise Project Management Solution; Delivery Guide, Course Number 2732A, and Module 4: Implementing Project Server, Microsoft Press, Redmond, 2003, pp. 4-5

Question: 8

You are the administrator of the Microsoft Enterprise Project Management solution for Company.com. Company.com manages 500 projects by using the Enterprise Project Management solution for Microsoft Office Project Server 2003. Most projects are updated once each month. Management requests that Resource Availability views be refreshed each day. You install the Enterprise Project Management solution on two servers, Company1 and Company2, which have identical hardware. You need to distribute the Enterprise Project Management server components on Company1 and Company2 to minimize the time it takes to refresh Resource Availability views. What should you do?

- A. Set up Microsoft SQL Server 2000, Analysis Services, Microsoft Windows SharePoint Services, Project Server, Views Processing, and Session Management on Company1. Install SQL Server on Company2 to store the Analysis Services repository.
- B. Set up SQL Server, Analysis Services, Views Processing, and Session Management on Company1. Install Project Server and Windows SharePoint Services on Company2.
- C. Set up SQL Server, Windows SharePoint Services, Project Server, Views Processing And Session Management on Company1. Install Analysis Services on Company2.
- D. Set up SQL Server, Analysis Services, Windows SharePoint Services, Project Server, And Session Management on Company1. Install Views Processing on Company2.

Answer: D**Explanation:**

If you will be doing a multiple-server installation where the Project Server Front End, Session Manager, and Views Processing components will be on different computers, then you must install the Views Processing/Session Manager components on their servers before installing the Project

Server Front End components on its server. One of the setup requirements is to have Views Processing on a separate server. When projects are published to the Microsoft Project Server, a copy of the project is uploaded and is used to create project view data. This process consumes a large share of network resources because it must open the project in the Microsoft Project OLE DB provider and save data from which views will be built. You can offload this service to improve the scalability and performance of a single IIS-based server running Microsoft Project Server, or of a farm of IIS-based servers. If the Project Server 2003 front-end computer is deployed in a Network Load Balancing cluster then this service must be moved to a computer outside the Network Load Balancing cluster.

Reference:

Microsoft Training and Certification: Microsoft Official Curriculum: Planning, Deploying, and Managing and Enterprise Project Management Solution; Delivery Guide, Course Number 2732A Module 4: Implementing Project Server, Microsoft Press, Redmond, 2003, pp. 4-5

Question: 9

You are the administrator of the Microsoft Enterprise Project Management solution for your company. You install Microsoft SQL Server 2000 and Analysis Services on ServerA. You install Microsoft Office Project Server 2003 on ServerB. You install Microsoft Windows Server 2003 with default settings on ServerC. You plan to install Microsoft Windows SharePoint Services on ServerC. You have to configure ServerC so that Windows SharePoint Services can be installed and configured. What should you do? (Each correct answer presents part of the solution. Choose two.)

- A. Install IIS.
- B. Change the default Web site port from 80 to 90.
- C. Reset the password for the IUSR_ServerC account.
- D. Remove enhanced Microsoft Internet Explorer security.
- E. Run ProxyCfg.exe. Add ServerB to the list of bypassed servers.

Answer: A, D

Question: 10

You are the administrator of the Microsoft Enterprise Project Management solution for Company.com. Company.com uses Microsoft Office Project Server 2003. You install Project Server, Views Processing, and Session Management on a Server, APPServer. You install Microsoft SQL Server 2000 on a second server, DBServer. You install Microsoft

Windows SharePoint Services on a third server, Server1, and you connect Project Server to it. Company.com policy requires all servers to indicate their function in the server name. You change the name of Server1 to "WSSServer." Users report that subwebs are not created when they save a new project. You have to configure the servers so that subwebs can be created successfully for new projects. What should you do? (Each correct answer presents part of the solution. Choose two.)

- A. Run Wsswiz.exe on WSSServer.
- B. Add WSSServer to the list of trusted sites on APPServer.
- C. Run ProxyCfg.exe on APPServer. Add WSSServer to the list of bypassed server.
- D. Change the connection information in Project Server on APPServer to point to WSSServer.
- E. Delete the Windows SharePoint Services virtual site on WSSServer. Recreate the virtual site.

Answer: C, D

Explanation:

A Microsoft Project WSS subweb must be created for each project. The subweb creates a document space, within which Project Server stores documents and issues relating to that project. Following the situation outlined in the question it follows that the server was only renamed, you thus need to run ProxyCfg.exe on the APPServer and then add WSSServer to the list of bypassed servers as well as change the connection information in Project Server on APPServer to point to WSSServer.

Reference:

Carl Chatfield and Timothy Johnson, Microsoft Office Project 2003 Step by Step, Microsoft Press, Redmond, 2004, Chapter 23: Managing Risks, Issues, and Documents with Project Server, p.

Question: 11

You are the administrator of the Microsoft Enterprise Project Management solution for Company.com. You decide to implement a pilot installation of Microsoft Office Project Server 2003. Project Server is installed with default security settings. All Project Server users are added as Team Members. Project managers need full access to all projects. Project managers are members of the Project Manager group. You must configure Project Server to allow members of the Project Manager group full access to all projects. What should you do?

- A. Apply the Project Manager Security Template to the Project Manager group.
- B. Select the All-current and future projects in Project Server option in the My Projects category.
- C. Change the My Organization category to allow users in this category to view all projects they manage.

- D. Create a Project Manager category with the option set to view all current and future Projects in Project Server.

Answer: B

Explanation:

One Selects the All-current and future projects in the Project Server database to allow users who have permissions to this category to see all current and future projects in the Project Server database. If you allow or deny permissions at the organizational level, all users within the organization are affected regardless of permissions set elsewhere. Only a single organization exists for each Project Server installation.

Reference:

Microsoft Corporation, Microsoft Office Project Server 2003 Administrator's Guide, Microsoft Press, Redmond, 2003, p. 52

Get Full Version of Exam 70-281 PDF Q&A

techeXams presents authentic, genuine and valid study material, which promise 100% success in very first attempt. To take optimal results for 70-281 exam, you need to buy full version of 70-281 question and answer. An average of approximately 10 to 15 hours should be spent to study these exam questions and you will surely pass your exam. So come join us and quench your thirst for knowledge.

Get complete 70-281 exam questions and answers by visiting URL

["http://www.techexams.ws/exams/70-281.do"](http://www.techexams.ws/exams/70-281.do)