



70-451

(PRO: Designing Database Solutions and Data Access Using Microsoft SQL Server 2008)

Important Note, Please Read Carefully

techeXams' 70-451 Exam is a comprehensive compilation of questions and answers that have been developed by our team of certified professionals. In order to prepare for the actual exam, all you need is to study the content of this exam questions. An average of approximately 10 to 15 hours should be spent to study these exam questions and you will surely pass your exam. It's our guarantee.

Latest Version

We are constantly reviewing our products. New material is added and old material is revised. Free updates are available for 90 days after the purchase. You should check your member zone at techeXams and update 3-4 days before the scheduled exam date. Here is the procedure to get the latest version:

1. Go to <http://www.techeXams.ws/>
2. Log in the User Center
3. The latest versions of all purchased products are downloadable from here. Just click the links.

Feedback

If you find any possible improvement, then please do let us know. We are always interested in improving the quality of this product. Feedback can be send at: **customer.service@techeXams.ws**

Explanations

This product does not include explanations for all questions at the moment. If you are interested in providing explanations for this exam, please contact **customer.service@techeXams.ws**.

Copyright

techeXams holds the copyright of this material. techeXams grants you a limited license to view and study this material, either for personal or commercial use. Unauthorized reproduction or distribution of this material, or any portion thereof, may result in severe civil and criminal penalties, and will be prosecuted to the maximum extent possible under law.

Disclaimer

Neither this guide nor any material in this guide is sponsored, endorsed or affiliated with any of the respective vendor. All trademarks are properties of their respective owners.

Question: 1

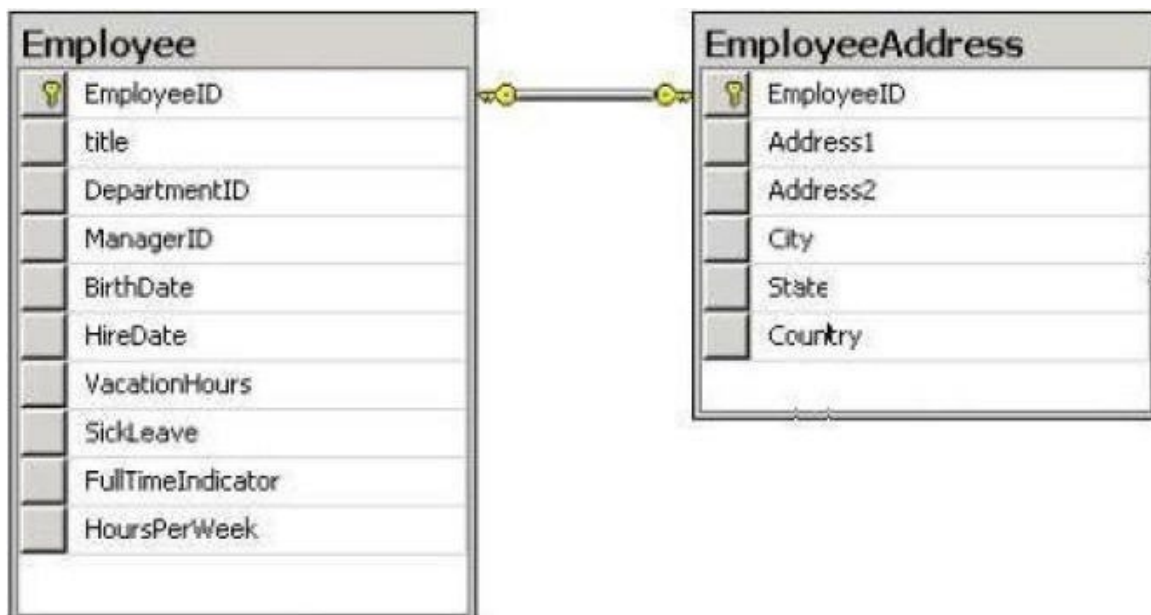
You work in an International company named TAKEEEN. And you're in charge of the database of your company. You use SQL Server 2008 to create a solution. You intend to import data from an external source into a table. You must make sure that the tasks below are achieved: The rows that fail the foreign key constraints during import are inserted into a separate table. Even if the import encounters rows that fail foreign key constraints, it is successfully completed. So what should you do?

- A. An AFTER trigger has to be used
- B. CHECK constraints have to be used
- C. An INSTEAD OF trigger has to be used
- D. During the import process disable the foreign keys.

Answer: C

Question: 2

You work in an International company named TAKEEEN. And you're in charge of the database of your company. There is a SQL Server 2008 instance which hosts a third-party database. A database application is developed for the instance. You have no permissions to modify the database schema. The database contains two tables that are as shown in the diagram above. On the basis of FullTimeIndicator flag, you intend to extract address information about full-time employees. In order to simplify the extraction process, you have to design a data access layer. So what should you do?



- A. You should design an Entity Data Model. The EMPLOYEES and ADDRESS entities are contained in this Model
- B. On the database, you should create a view. Full-time employees and their address details are included in it
- C. You should re-design the underlying database model. Employee and address information are included in one table
- D. You should design a conceptual Entity Data Model. An entity named EMPLOYEE_ADDRESS is contained in the Model. Make sure that information about employees and their addresses is contained in this entity

Answer: D

Question: 3

You work in an International company named TAKEEEN. And you're in charge of the database of your company. You intend to use SQL Server 2008 to create a database which will be use by a scheduling application. The following information is stored in this database:

Rooms Classes Students Teachers

You have to consider the following facts in the design plan: Each room can host one or more classes; Each class can be in one or more rooms; Each teacher can teach one or more classes; Each student can register for one or more classes.

Look at the entities below: Rooms; Classes; Students; Teachers; ClassesTeachers; ClassesStudents

You identify these entities for the database design. In order to ensure normalization, you have to design the database. So what should you do?

- A. First, a new entity named ClassesRooms should be added. Then use this entity to establish a relationship between the Classes and Rooms entities
- B. First, a new entity named TeachersRooms should be added. Then use this entity to establish a relationship between the Teachers and Rooms entities
- C. First, a new entity named StudentsRooms should be created. Then use this entity to establish a relationship between the Students and Rooms entities.
- D. First, a new entity named TeachersStudents should be added. Then use this entity to establish a relationship between the Teachers and Students entities

Answer: A

Question: 4

You work in an International company named TAKEEEN. And you're in charge of the database of your company. You intend to use SQL Server 2008 instance to create a database solution which has some requirements: mport data from various data sources

3

such as Microsoft Office Excel, Microsoft SQL Server 2000, Microsoft SQL Server 2005, and CSV files; Profile the source data before it is imported; Allow mobile users to use heterogeneous data stores; Provide mobile users with collaboration and offline capabilities. In order to achieve these requirements, you have to configure the suitable SQL Server components. When performing this, you have to use as little administrative effort as possible. So which SQL Server components should you use? (choose more than one)

- A. Reporting Services
- B. Integration Services
- C. Analysis Services
- D. Notification Services
- E. Microsoft Sync Framework

Answer: B, E

Question: 5

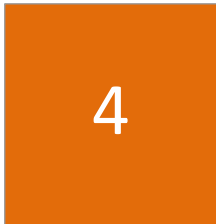
You work in an International company named TAKEEEN. And you're in charge of the database of your company. You intend to use SQL Server 2008 to create a database solution. The full-text search component is installed in the database which supports a Web site. Look at the exhibit below:

You intend to create a table named Courses which has the structure above. On the basis of the CourseTitle field, users of the Web site will search for courses.

When the search is launched for a course by a user, a full-text must be constructed to ensure the compliances below: when the exact search phrase is found, rows are returned; rows are in order of how well they match with the search phrase. So what should you specify in the full-text query?

Column Name	Data Type
Course ID	Integer
Course Title	Varchar (500)
Course Description	Varchar (4000)
Author ID	Integer

- A. A CONTAINS predicate
- B. A FREETEXT predicate
- C. A CONTAINSTABLE function
- D. A FREETEXTTABLE function



Answer: C

Question: 6

You work in an Internet-based company that has a database of your company's solutions. You are creating a new solution. The exhibit shows the structure of the database. The requirements are shown below. First, an employee completes the requirements. When the requirements are completed and the employee is deleted, the link to the assignment is no longer available to complete the requirements to maintain data integrity.

Entity
Employee
Task
Assignment

- A. On the Employee entity, a primary key constraint should be created on the EmployeeID attribute.
- B. On the TaskID attribute, a primary key constraint should be created after the Assignment entity is created.
- C. On the TaskID attribute, a primary key constraint should be created after the Assignment entity is created.
- D. On the TaskID attribute, a primary key constraint should be created after the Assignment entity is created.

charge of the database. The exhibit below shows the structure of the database.

deleted upon completion. First, the employee completes the requirements to maintain data integrity.

Entity
Employee
Task
Assignment

could be created. The exhibit below shows the structure of the database.

ities, foreign Keys, and On Delete action.

ign Keys constraints be Task and

Answer: D

Free Exam 70-451 Questions

Get complete 70-451 exam questions and answers by visiting URL

["http://www.techexams.ws/exams/70-451.do"](http://www.techexams.ws/exams/70-451.do)