



70-686

(Pro: Windows 7, Enterprise Desktop Administrator)

Document version: 9.30.06

Important Note About 70-686 PDF

techeXams' **70-686 PDF** is a comprehensive compilation of questions and answers that have been developed by our team of certified professionals. In order to prepare for the actual exam, all you need is to study the content of this exam questions. An average of approximately 10 to 15 hours should be spent to study these exam questions and you will surely pass your exam. It's our guarantee.

Copyright

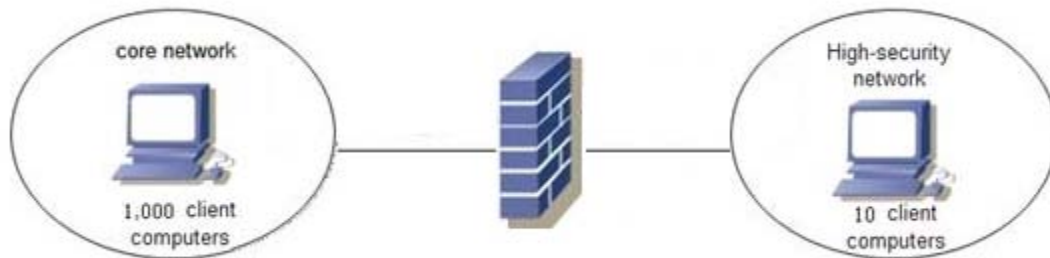
techeXams holds the copyright of this material. techeXams grants you a limited license to view and study this material, either for personal or commercial use. Unauthorized reproduction or distribution of this material, or any portion thereof, may result in severe civil and criminal penalties, and will be prosecuted to the maximum extent possible under law.

Disclaimer

Neither this guide nor any material in this guide is sponsored, endorsed or affiliated with any of the respective vendor. All trademarks are properties of their respective owners.

Question: 1

Your company has two network segments. The core network segment is where centralized management is performed. The high-security network segment is an isolated network. A firewall between the core network segment and the high-security network segment limits network communication between the segments. These network segments are shown in the following diagram.



Your company plans to deploy Windows 7 to all client computers. You need to manage activation for client computers that are located in the high-security network segment. What should you do?

- A. Deploy the Key Management Service (KMS) in the core network segment.
- B. Deploy the Key Management Service (KMS) in the high-security network segment.
- C. Install the Volume Activation Management Tool (VAMT) in the core network segment.
- D. Install the Volume Activation Management Tool (VAMT) in the high-security network segment.

Answer: D

Question: 2

Your network includes the client computer hardware configurations shown in the following table.

Memory	HAL type	Architecture
2 GB	ACPI Uniprocessor PC	X86
4 GB	ACPI Uniprocessor PC	X64
2 GB	ACPI Multiprocessor PC	X86
8 GB	ACPI Multiprocessor PC	X64

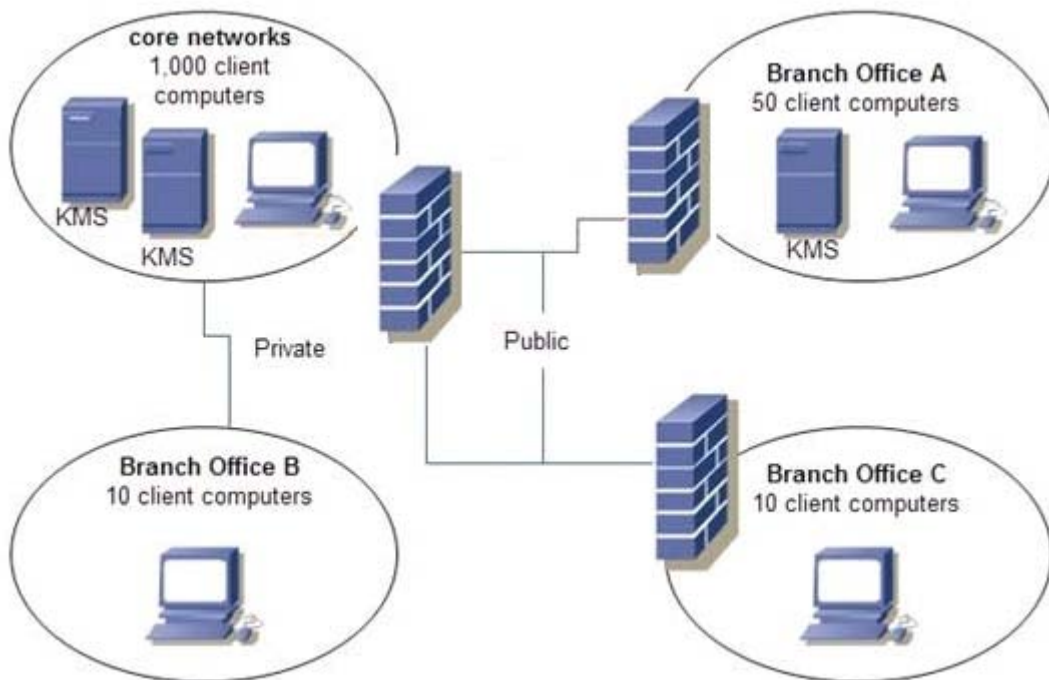
You need to deploy Windows 7 by using the fewest images. How many images are needed?

- A. 2
- B. 3
- C. 4
- D. 8

Answer: A

Question: 3

Your company's network is shown in the following diagram.



All client computers are members of the techexams.ws Active Directory Domain Services (AD DS) domain. Each network segment is represented by an AD DS site object that is named to match the network segment.

Your company plans to deploy Windows 7 to all client computers. You need to manage the deployment to ensure that client computers in branch office C can activate Windows.

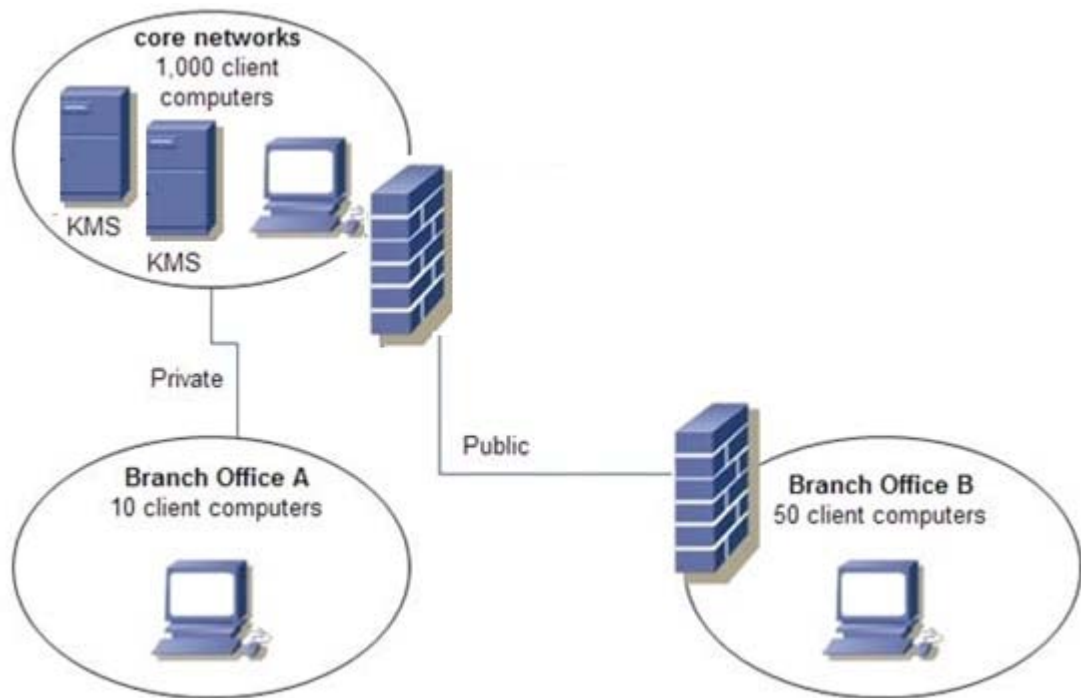
- A. What should you do?

- B. Deploy the Multiple Activation Key (MAK) in branch office C.
- C. Deploy the Key Management Service (KMS) in branch office C.
- D. Create a DNS service (SRV) resource record named _vlmcs._tcp.BranchOfficeC._sites.techexams.ws.
- E. Create a DNS service (SRV) resource record named _vlmcs._udp.BranchOfficeC._sites.techexams.ws.

Answer: A

Question: 4

Your company's network is shown in the following diagram.



The company plans to deploy Windows 7 to all client computers. You need to manage the deployment to ensure that client computers in branch office A and in branch office B can activate Windows.

Which two actions should you perform? (Each correct answer presents part of the solution. Choose two.)

- A. Deploy the Key Management Service (KMS) in branch office A.
- B. Deploy the Key Management Service (KMS) in branch office B.

- C. Configure DNS so that client computers in branch office A use the Key Management Service (KMS) in the core network.
- D. Configure DNS so that client computers in branch office B use the Key Management Service (KMS) in the core network.

Answer: BC

Question: 5

Your network consists of 1,000 client computers that run Windows XP. The computers do not have access to the Internet.

You plan to migrate 200 of the computers immediately to Windows 7. The remainder will be migrated over the next several months.

You need to plan the most efficient method for activating all of the computers.

What should you do?

- A. Use the Key Management Service (KMS) for all the computers.
- B. Use Multiple Activation Key (MAK) Independent for all the computers.
- C. Use Multiple Activation Key (MAK) Proxy for the first 200 computers, and then use the Key Management Service (KMS) for the remaining computers.
- D. Use Multiple Activation Key (MAK) Independent for the first 200 computers, and then use Multiple Activation Key (MAK) Proxy for the remaining computers.

Answer: A

Question: 6

Your company's network has client computers that run Windows 7.

When a user attempts to log on to the domain from a computer named Client1, she receives the following message:

The system cannot log you on to this domain because the system's computer account in its primary domain is missing or the password on that account is incorrect. You need to ensure that the user can log on to the domain from Client1.

What should you do?

- A. Disjoin and rejoin Client1 to the domain.
- B. Add the computer account for Client1 to the Domain Computers Active Directory group.
- C. Reset the account password for Client1 through Active Directory Users and Computers.
- D. Reset the account password for the user through Active Directory Users and Computers.

Answer: A

Get Full Version of Exam 70-686 PDF Q&A

techeXams presents authentic, genuine and valid study material, which promise 100% success in very first attempt. To take optimal results for 70-686 exam, you need to buy full version of 70-686 question and answer. An average of approximately 10 to 15 hours should be spent to study these exam questions and you will surely pass your exam. So come join us and quench your thirst for knowledge.

Get complete 70-686 exam questions and answers by visiting URL

["http://www.techexams.ws/exams/70-686.do"](http://www.techexams.ws/exams/70-686.do)