



**9A0-146**

Adobe® Dreamweaver CS5 ACE Exam

Document version: 1 .04 .11

## Important Note About 9A0-146 PDF

techeXams' **9A0-146 PDF** is a comprehensive compilation of questions and answers that have been developed by our team of certified professionals. In order to prepare for the actual exam, all you need is to study the content of this exam questions. An average of approximately 10 to 15 hours should be spent to study these exam questions and you will surely pass your exam. It's our guarantee.

### Copyright

techeXams holds the copyright of this material. techeXams grants you a limited license to view and study this material, either for personal or commercial use. Unauthorized reproduction or distribution of this material, or any portion thereof, may result in severe civil and criminal penalties, and will be prosecuted to the maximum extent possible under law.

### Disclaimer

Neither this guide nor any material in this guide is sponsored, endorsed or affiliated with any of the respective vendor. All trademarks are properties of their respective owners.

## Question: 1

Larry works as a Web designer for Ucweb Inc. He has been assigned the task of creating a new Web site using Dreamweaver CS4. Which of the following actions will he take to define a new site from the application bar?

- A. In the Site menu, select New Site.
- B. In the File menu, select New.
- C. In the Standard toolbar, select New.
- D. In the Site menu, select Manage sites.

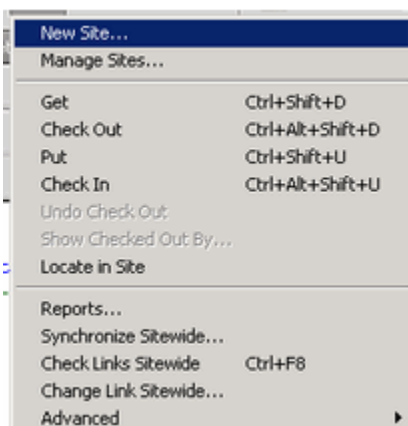
Answer: A

**Explanation:**

The Site menu option present in the Application bar provides the feature to create and define a new site in Dreamweaver CS4. Take the following steps to define a site: 1. Select the Site menu option present in the application bar to go to the New site option.



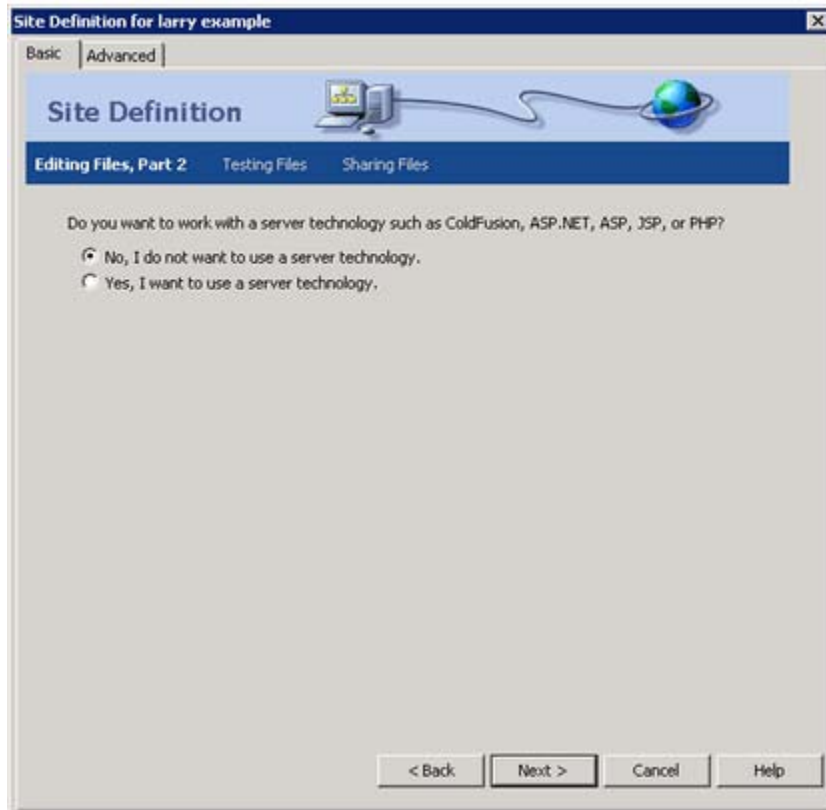
2. Click New Site in the drop down menu.



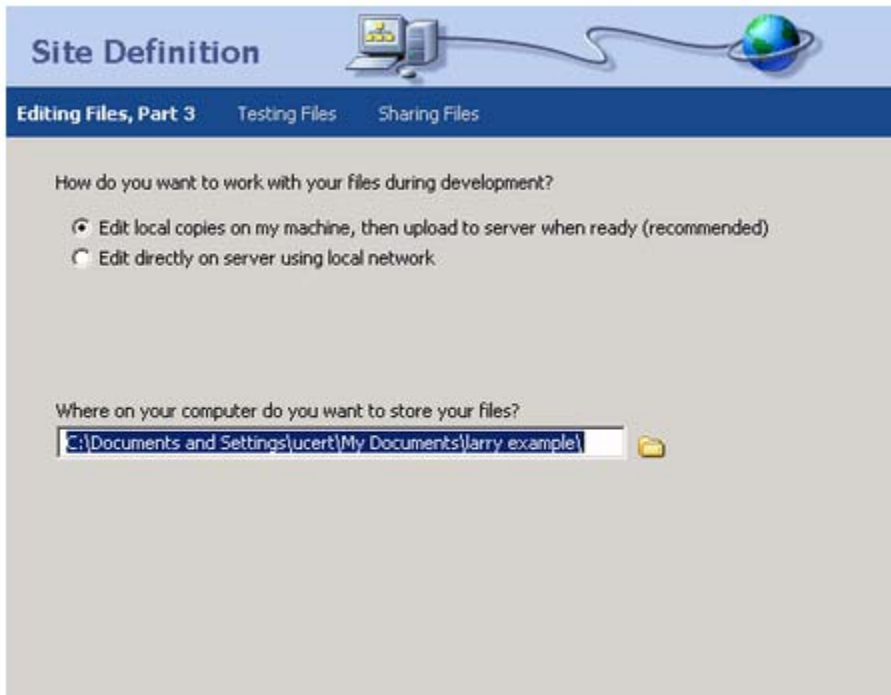
3. A new interface window, the Site Definition dialog box, appears where the name of the site is entered. As you will be working locally, entering an HTTP address is not necessary, so it may be left blank. Click the Next button.



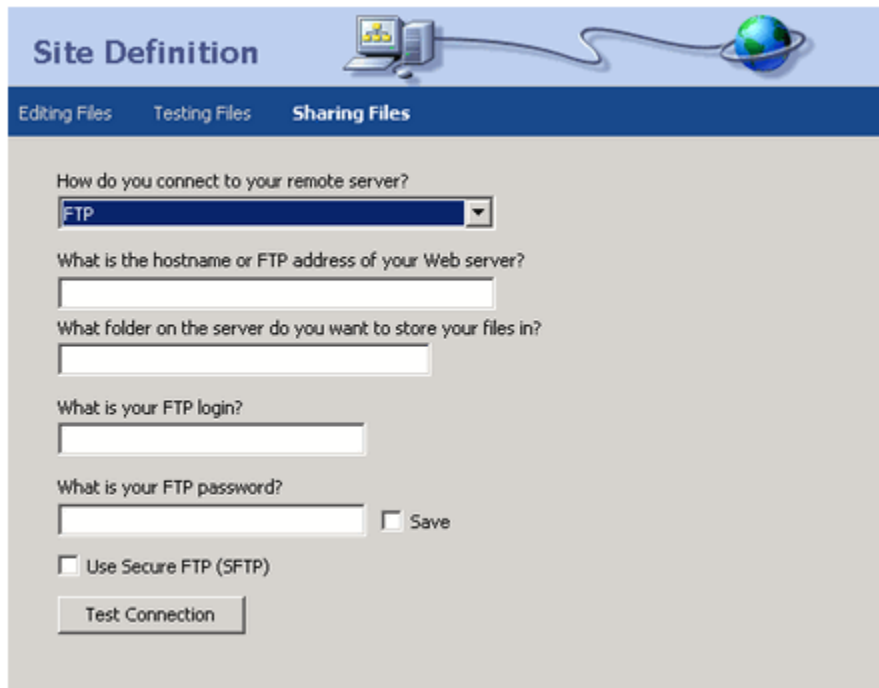
4. You can use Dreamweaver to build web applications using any of the server technologies. ColdFusion, ASP.NET, ASP, JSP, or PHP. For now, click on the No, I don't want to use a server technology radio button.



5. Click on the first radio button if you want to edit the files on your machine.



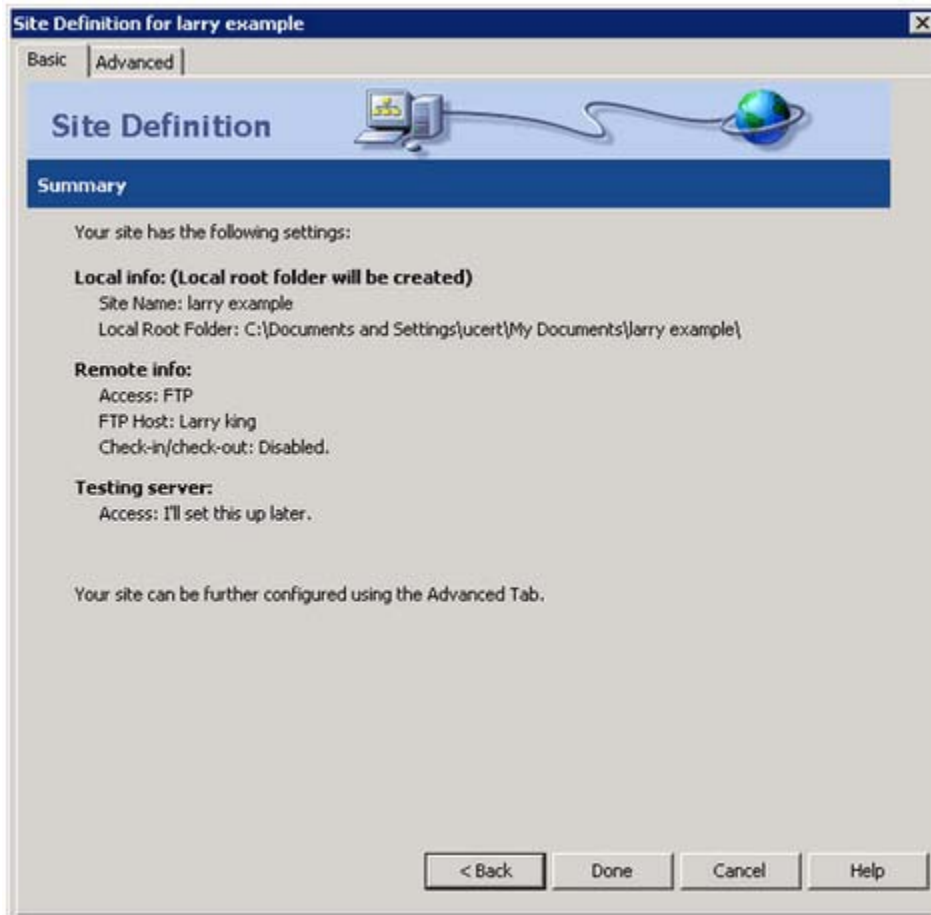
6. The additional fields for FTP address, folder location, login, and password appear in this dialog box. These fields are filled if you require to gain FTP access to a server. 7. Fill the required entries, and click the Next button. 8. Check the Use Secure FTP (SFTP) and Save check boxes for security and to save the password, respectively.



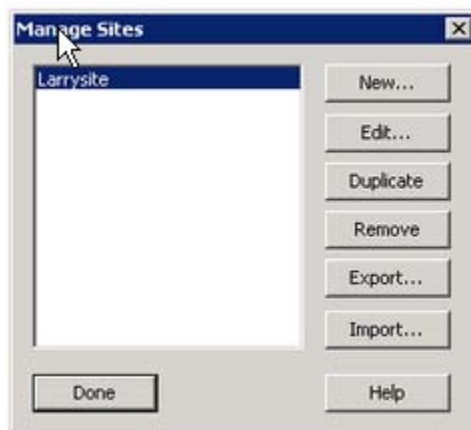
The screenshot shows a 'Site Definition' dialog box with a blue header and a light gray body. The header contains the title 'Site Definition' and an illustration of a computer connected to a globe. Below the header is a navigation bar with three tabs: 'Editing Files', 'Testing Files', and 'Sharing Files'. The main content area contains the following fields and controls:

- A dropdown menu labeled 'How do you connect to your remote server?' with 'FTP' selected.
- A text input field labeled 'What is the hostname or FTP address of your Web server?'.
- A text input field labeled 'What folder on the server do you want to store your files in?'.
- A text input field labeled 'What is your FTP login?'.
- A text input field labeled 'What is your FTP password?' with a 'Save' checkbox to its right.
- A checkbox labeled 'Use Secure FTP (SFTP)'.
- A 'Test Connection' button.

9. Now you have completed the site definition process, using the Basic interface of the Site Definition wizard. This wizard shows you the entire summary of the site in the form of a site definition.



Answer: D is incorrect. This option is valid in the case of managing a site that has been already defined. There are different options present to manage sites. Larry can use this to manage his site after defining it. The image below shows the managing options present in the Managing Sites dialog box.



Answer: B is incorrect. This option is used to create new documents or pages for a web site. It cannot be used to create a site or to define it. Dreamweaver also includes tools like this to allow a user to

create and test pages to ensure compatibility with most users. CSS layouts are designing features that can be employed using this tool.

Answer: C is incorrect. The New option in the Standard toolbar is an alternative way of creating new documents or web pages for a site.

#### Question: 2

**A user can create a toolbar in Dreamweaver by creating a file to define a toolbar and by placing the file in the Configuration/Toolbars folder. Which of the following files are used to create a toolbar? Each correct answer represents a complete solution. Choose all that apply.**

- A. templatefile.xml
- B. newtoolbar.xml
- C. MyCommand.htm
- D. toolbars.xml

Answer: D, B, and C

#### Explanation:

A user can create a toolbar in Dreamweaver by creating a file to define a toolbar, and by placing the file in the Configuration/Toolbars folder. The following files are used to create a toolbar in Dreamweaver: toolbars.xml. A user can edit this file to change the contents of the toolbar. newtoolbar.xml. A user can create this file to create a toolbar. imagefile.gif. This file contains the icon image for toolbar control. MyCommand.htm. This file is a command file associated with a toolbar item.

Answer: A is incorrect. There is no file such as templatefile.xml.

#### Question: 3

**What will you do to change the name of a file in Dreamweaver?**

- A. Go to the Site menu, click on New Site and then change the site name.
- B. In the Files panel, right click on the file, select New file and then enter a name.
- C. In the Files panel, right click on the file, then click on Edit and select Duplicate.
- D. In the Files panel, click on the file, pause, then click again and type the name.



Answer: D

**Explanation:**

A user can easily rename a file in the Files panel by clicking on it, pausing and again clicking. If the file is clicked without a pause then the file is opened in the Document window. A user can right-click (Windows) or Control-click (Macintosh) the file's icon, then select Edit > Rename. Then he can type the new name over the existing name. The Files panel is responsible for allowing a user to perform all the tasks related to the files associated with the site. It contains buttons to view and manage the files existing in the Remote and Local folders. The Files panel contains the following buttons: Put. This button is used to copy the files to the Remote site from the Local site.

Get. This button is used to copy the files to the Local site from the Remote site. Synchronize. This button is used for synchronizing the files between the Remote and Local sites. Check In. This button facilitates a user to unlock a file for other user to work on it while working in a collaborative environment. Check out. This button facilitates a user to lock a file to work on it while working in a collaborative environment. The Files panel

**Question: 4**

**Mark works as a Site Engineer for ABC Inc. Mark has been assigned the task to make the Web page of the company's site heavy. Mark adds a number of links to other sites on the Web page. When one of the links is clicked, an error 404 is returned. The link shows the message of Server not found. Which of the following is the cause of the problem?**

- A. The link to the site is an orphan link.
- B. The site is not valid for accessibility guidelines.
- C. The link to the site is an external link.
- D. The link to the site is a broken link.

Answer: D

**Explanation:**

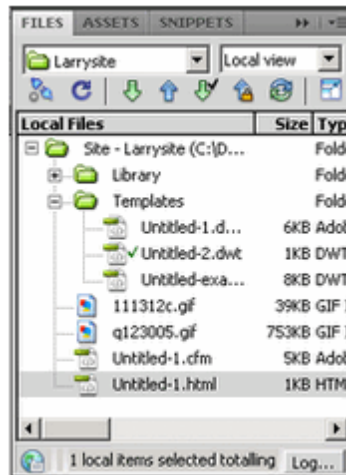
When the server is not able to be located, error 404 is returned. A broken link, also known as a dead link, is a link on the World Wide Web that points to a web page or server that is permanently unavailable. The most common result of a dead link or broken link is a 404 error, which indicates that the web server processed the instructions, but the specific page could not be found. In

Dreamweaver, the Broken Links report in the Link Checker panel shows the listing of the links that point to files which are not present within the local site.

Answer: C is incorrect. The external links work fine if they are not broken. External links are the links that connect to outside web sites, pages, or files. Dreamweaver does not validate external links.

Answer: A is incorrect. Orphan links are those links that are not connected to any other file or link in the whole Dreamweaver site.

Answer: B is incorrect. Accessibility guidelines neither give an error nor make the server unavailable, if they are not validated for a Web site.



## Get Full Version of Exam 9A0-146 PDF Q&A

techeXams presents authentic, genuine and valid study material, which promise 100% success in very first attempt. To take optimal results for 9A0-146 exam, you need to buy full version of 9A0-146 question and answer. An average of approximately 10 to 15 hours should be spent to study these exam questions and you will surely pass your exam. So come join us and quench your thirst for knowledge.

Get complete 9A0-146 questions and answers by visiting URL

["http://www.techexams.ws/exams/9A0-146.do"](http://www.techexams.ws/exams/9A0-146.do)