



COG-400

(IBM Cognos 8 Planning Application Consultant)

Document version: 9.30.06

Important Note, Please Read Carefully

techeXams' COG-400 Exam is a comprehensive compilation of questions and answers that have been developed by our team of certified professionals. In order to prepare for the actual exam, all you need is to study the content of this exam questions. An average of approximately 10 to 15 hours should be spent to study these exam questions and you will surely pass your exam. It's our guarantee.

Latest Version

We are constantly reviewing our products. New material is added and old material is revised. Free updates are available for 90 days after the purchase. You should check your member zone at techeXams and update 3-4 days before the scheduled exam date. Here is the procedure to get the latest version:

1. Go to <http://www.techeXams.ws/>
2. Log in the User Center
3. The latest versions of all purchased products are downloadable from here. Just click the links.

Feedback

If you find any possible improvement, then please do let us know. We are always interested in improving the quality of this product. Feedback can be send at: **customer.service@techeXams.ws**

Explanations

This product does not include explanations for all questions at the moment. If you are interested in providing explanations for this exam, please contact **customer.service@techeXams.ws**.

Copyright

techeXams holds the copyright of this material. techeXams grants you a limited license to view and study this material, either for personal or commercial use. Unauthorized reproduction or distribution of this material, or any portion thereof, may result in severe civil and criminal penalties, and will be prosecuted to the maximum extent possible under law.

Disclaimer

Neither this guide nor any material in this guide is sponsored, endorsed or affiliated with any of the respective vendor. All trademarks are properties of their respective owners.

Question: 1

An administrator has created an access table in the Contributor Administration Console and an access level of HIDDEN has been specified for several D-List items. What effect will this access level have?

- A. The data for the D-List items will not be downloaded to the Contributor Web grid.
- B. The data for the D-List items will be downloaded to the Contributor Web grid but will be read-only.
- C. The data for the D-List items will be downloaded to the Contributor Web grid but will not be visible to users.
- D. The data for the D-List items will be deleted from the Contributor application.

Answer: C

Question: 2

When creating a deployment package in the Contributor Administration Console, what part associated with the planning network may be included?

- A. The Framework Manager model
- B. The Contributor model and data
- C. The Cognos Connection Event agents
- D. The Cognos Connection Report Studio reports

Answer: B

Question: 3

Working with a single large cube on the Contributor Web site can lead to performance issues. For example, breakback and data entry can become slow. To improve performance in this situation, what access table setting can be used in conjunction with cut-down models functionality?

- A. HIDDEN
- B. NO DATA
- C. READ
- D. WRITE

Answer: B

Question: 4

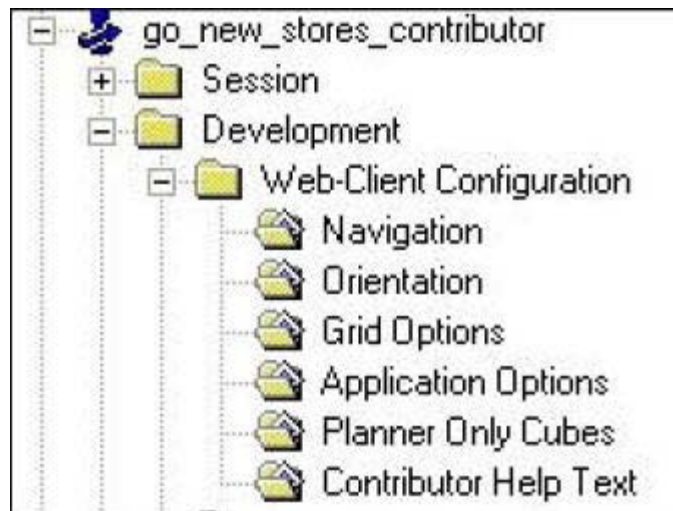
For data validation rule sets, which failure action does Cognos recommend to use with caution?

- A. Message Only
- B. Restrict Submit
- C. Restrict Edit
- D. Restrict Save and Submit

Answer: D

Question: 5

An administrator wants users who have review rights to an e.List item to edit that e.List item up to its review level depth. Which folder must the administrator access to enable this functionality?

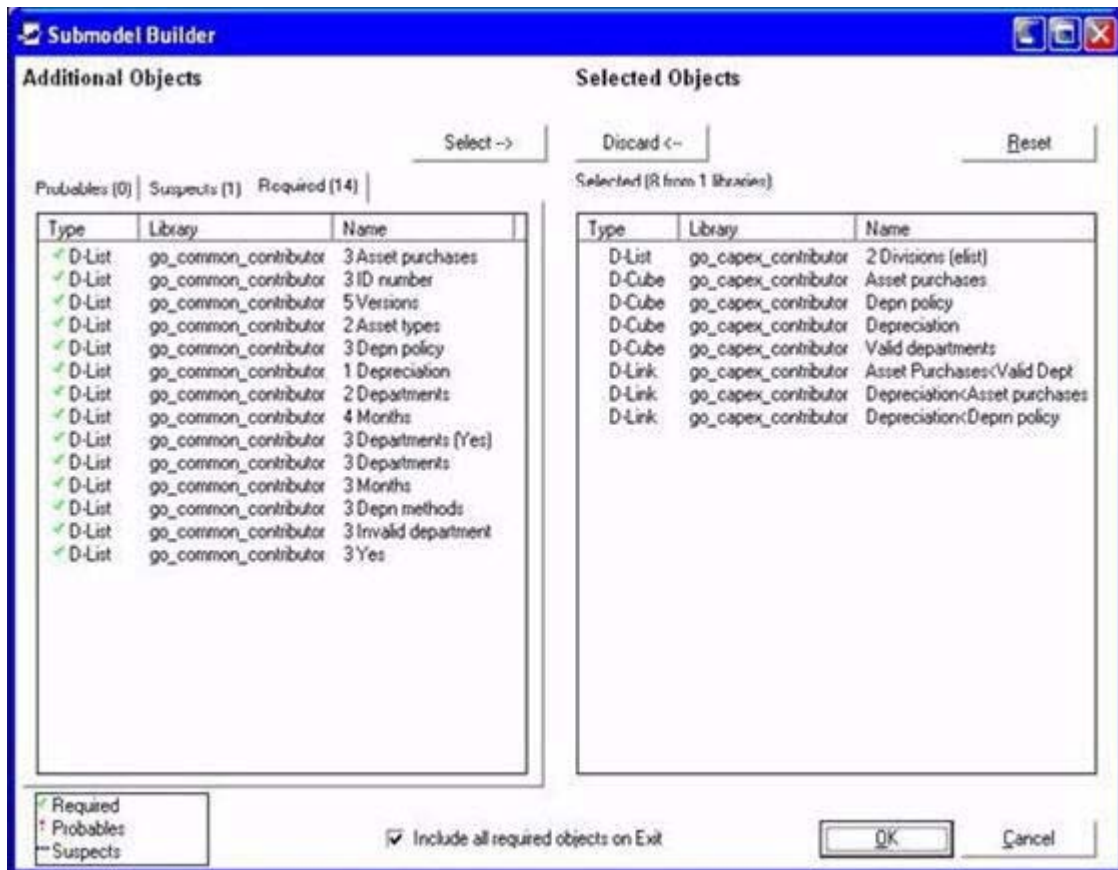


- A. Grid Options
- B. Application Options
- C. Planner Only Cubes
- D. Navigation

Answer: B

Question: 6

The below graphic shows all objects in a model. Which is true of the objects on the Required tab?



- A. If these objects remain in the go_common_contributor library, the Contributor application can be created without errors
- B. The 3 Depn policy D-List is located in the Asset Purchases, Depn policy, Depreciation, and Valid departments D-Cubes
- C. The 4 Months D-List is located in the Asset Purchases, Depn policy, Depreciation, and Valid departments D-Cubes
- D. These objects must be moved to the go_capex_contributor library before the Contributor application can be created without errors

Answer: A

Question: 7

Which of the following statements concerning an e.List import file is true?

- A. The EListItemName can be no more than 50 characters.
- B. The e.List import file must contain a column specifying the order of the e.List items.
- C. The e.List may be imported from a comma-delimited file.

D. The EListItemCaption is used when importing data into the application using an Administration Link

Answer: C

Question: 8

A new Contributor is added to the Contributor Administration Console. Which of the following is not a valid action?

- A. Assign a user or group to the Contributor
- B. Assign a user or group to the Contributor application
- C. Assign a user or group to the Contributor application and the Contributor
- D. Assign a user or group to the Contributor application and the Contributor application

Which of the following is not a valid action?

Answer: A

Question: 9

In a distributed Cognos environment, where are Contributor applications stored and maintained?

- A. On the datastore
- B. On the report server
- C. On the job server
- D. On the dispatcher

Where are Contributor applications stored and maintained?

Answer: A

COG-400 Demo Exam