



VCP510

VMware Certified Professional on vSphere 5

Document version: 8.04.11

Important Note About VCP510 PDF

techeXams' **VCP510 PDF** is a comprehensive compilation of questions and answers that have been developed by our team of certified professionals. In order to prepare for the actual exam, all you need is to study the content of this exam questions. An average of approximately 10 to 15 hours should be spent to study these exam questions and you will surely pass your exam. It's our guarantee.

Copyright

techeXams holds the copyright of this material. techeXams grants you a limited license to view and study this material, either for personal or commercial use. Unauthorized reproduction or distribution of this material, or any portion thereof, may result in severe civil and criminal penalties, and will be prosecuted to the maximum extent possible under law.

Disclaimer

Neither this guide nor any material in this guide is sponsored, endorsed or affiliated with any of the respective vendor. All trademarks are properties of their respective owners.

Question: 1

Under which two conditions is a master elected by vSphere HA? (Choose two.)

- A. When any cluster is created
- B. When a host is placed into maintenance mode
- C. When the datastore configuration changes
- D. When "Reconfigure for vSphere HA" is executed

Answer: B, D

Question: 2

A virtual machine failure occurs in a vSphere HA cluster, but the VM is not restarted. No error messages are given. Which two conditions would explain this behavior? (Choose two.)

- A. Monitoring sensitivity was set to Low.
- B. Application Monitoring Only was selected.
- C. The virtual machine has failed three times.
- D. The HA cluster was set up with all defaults.

Answer: C, D

Question: 3

An administrator is configuring a stretched HA cluster. The administrator wishes to restrict the failover of VMs to certain hosts within a given site. Which additional vSphere feature satisfies this requirement?

- A. vSphere Distributed Switch
- B. Distributed Resource Scheduler
- C. Datastore Clusters
- D. Host Folders

Answer: B

Question: 4

What are three use cases for vSphere Fault Tolerance? (Choose three.)

- A. Provide guaranteed up-time for a RDM enabled virtual machine
- B. Provide efficient scheduled reliability for a payroll virtual machine
- C. Provide guaranteed reliability for a development virtual machine with scheduled snapshots
- D. Provide guaranteed reliability for a legacy Windows NT virtual machine
- E. Ensure up-time for a Linux virtual machine without making any changes to the OS

Answer: B, D, E

Question: 5

Which two vSphere features can be used with virtual machines that are enabled for VMware Fault Tolerance? (Choose two.)

- A. EVC
- B. Storage vMotion
- C. RDMs in virtual compatibility mode
- D. VMware Virtual SMP

Answer: A, C

Question: 6

ACME Anvil Incorporated has several departments which each have unique resource requirements in their environment. 1. The Manufacturing department has ten production virtual machines. 2. The Development department has two test/dev virtual machines. 3. The Manufacturing virtual machines have only CPU reservations. 4. No Development virtual machine should be able to use more resources than any Manufacturing virtual machine requests. 5. Manufacturing department virtual machines must always be able to power on. Resource Pools will be used to address these requirements. When creating the "Manufacturing" and "Development" pools, which settings should be part of the configuration to meet the stated requirements? (Choose two.)

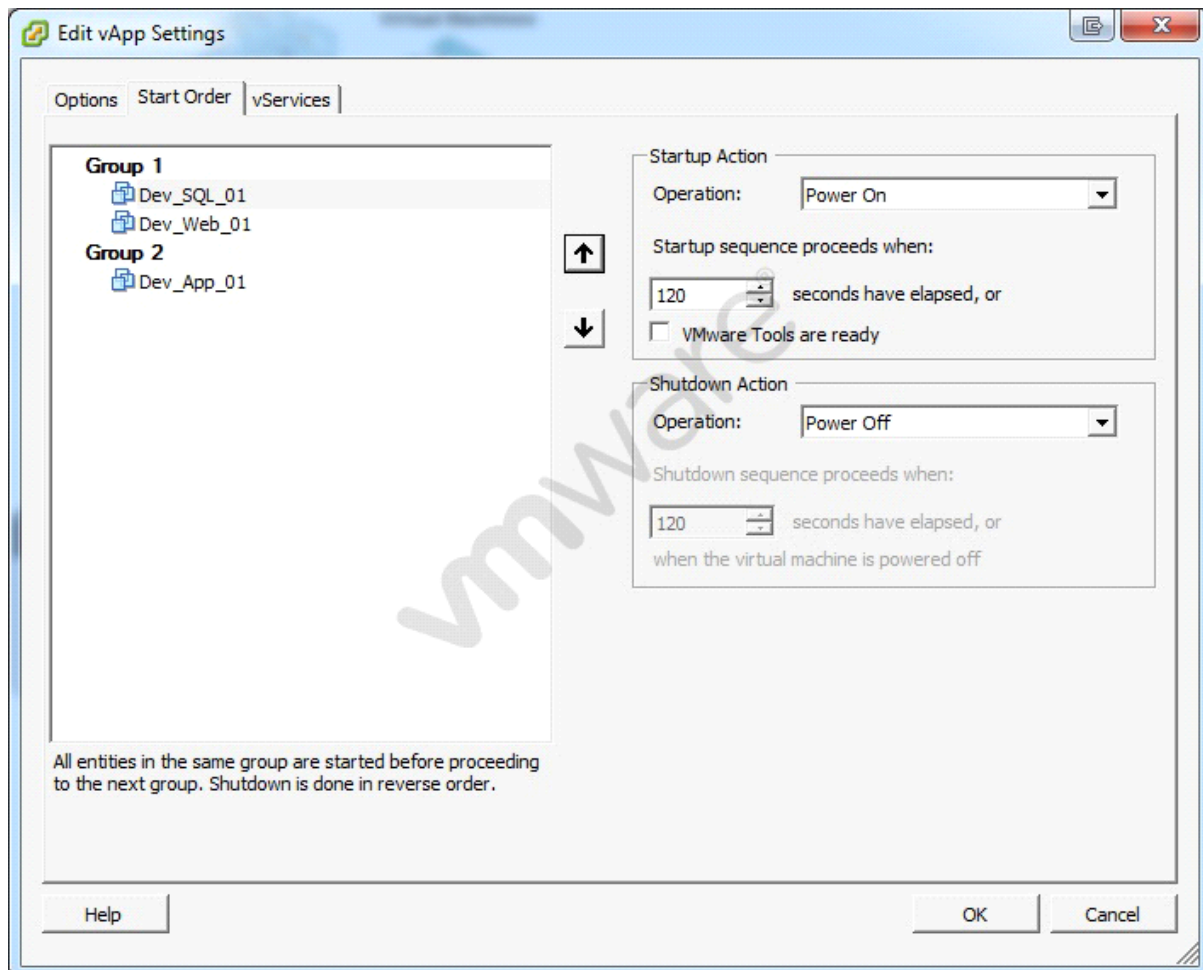
- A. Enable Expandable Reservation on Memory Resources on the Manufacturing pool
- B. Set a reservation for CPU Resources on the Manufacturing resource pool

- C. Create a required Group Rule to ensure Development virtual machines always run on the Development host
- D. Ensure the shares set on the Manufacturing pool are at least five times the shares set on the Development pool

Answer: B, D

Question: 7

Click the Exhibit button.



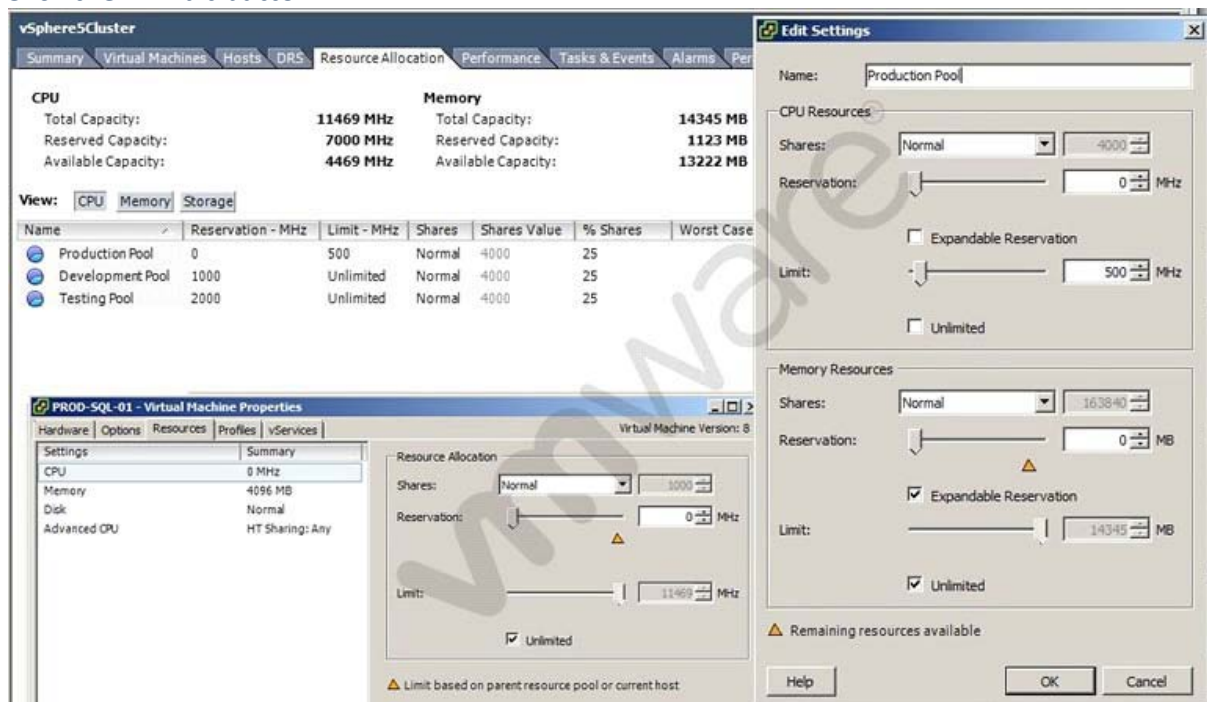
An administrator is creating a vApp for a multi-tiered web application. The vApp has been configured as shown in the exhibit. Testing of the vApp indicates that attempts to communicate with the web server on Dev_Web_01 fail. The developer wants to be sure the database server OS is completely started before the other servers power on. The developer also wants to minimize recovery time. What changes to the vApp configuration will correct the issues?

- A. Move the Dev_Web_01 virtual machine to Group 3 and increase the time value
- B. Move the Dev_App_01 virtual machine to Group 1 and increase the time value
- C. Move the Dev_Web_01 virtual machine to Group 3, decrease the time value and check VMWare Tools are ready
- D. Move the Dev_Web_01 virtual machine to Group 3, increase the time value and check VMWare Tools are ready

Answer: D

Question: 8

Click the Exhibit button.



Several virtual machines residing in the Production pool are exhibiting poor performance, and a critical virtual machine in the pool appears hung. What step can be taken to increase the performance of the critical virtual machine?

- A. Increase the CPU limit on the critical virtual machine.
- B. Increase the CPU shares on the critical virtual machine.
- C. Increase the CPU reservations on the resource pool.
- D. Increase the CPU limit on the resource pool.

Answer: D

Question: 9

An administrator has just finished deploying a vApp for a web service. What three options are available to the administrator for IP allocation within the vApp? (Choose three.)

- A. Transient
- B. Fixed
- C. DHCP
- D. Bridged
- E. NAT

Answer: A, B, C

Question: 10

An administrator is working to implement Storage Profiles in their environment. Which two ways can storage capabilities be generated? (Choose two.)

- A. They are generated by Datastore Clusters as LUNs are added to the cluster.
- B. They are automatically determined by the Storage Profile when it is created.
- C. They can be retrieved from the array through the VMware APIs for Storage Awareness (VASA).
- D. They can be manually generated by the administrator.

Answer: C, D

Question: 11

Which VMware solution uses the security of a vSphere implementation and provides linked-clone technology to virtual desktops?

- A. VMware ACE
- B. VMware View
- C. VMware Workstation
- D. VMware ThinApp

Answer: B

Question: 12

Which two conditions will prevent a virtual machine from being successfully migrated using Storage vMotion? (Choose two.)

- A. The virtual machine has an RDM.
- B. The virtual machine has Fault Tolerance enabled.
- C. The virtual machine is running on a vSphere 5.x Standard host.
- D. The virtual machine has a disk stored on an NFS datastore.

Answer: B, C

Question: 13

Under which two conditions can vStorage APIs for Array Integration (VAAI) provide a performance benefit? (Choose two.)

- A. When a virtual disk has VMDK files stored on an NFS datastore.
- B. When a virtual disk is created using the New Virtual Machine wizard.
- C. When cloning a virtual machine with snapshots.
- D. When a virtual disk is deleted.

Answer: A, D

Question: 14

An administrator is enabling Enhanced vMotion Compatibility (EVC) in a DRS cluster. The administrator wants only hosts with the newest Intel processors added to the cluster. Which setting satisfies this requirement?

- A. The baseline with the most CPUs listed
- B. The baseline with the fewest CPUs listed
- C. Any baseline that contains Future Intel processors
- D. Create a new baseline and add only the latest processor family

Answer: D

Question: 15

Which two conditions must exist on all hosts in the cluster if Enhanced vMotion Compatibility (EVC) is used? (Choose two.)

- A. The cluster must be enabled for DRS.
- B. All hosts in the cluster must be running ESX/ESXi 3.5 Update 2 or later.
- C. All hosts in the cluster must have hardware virtualization support enabled.
- D. The cluster must be enabled for HA.

Answer: B, C

Question: 16

Users are experiencing performance issues when updating their database hosted on a virtual machine. The administrator determines that disk I/O is high across one of the HBAs on the ESXi host containing the virtual machine. What is the action will most likely correct the issue without significantly impacting other users or datastores?

- A. Manually configure the disk multipathing policy to Round Robin for the datastore
- B. Migrate the virtual machine to an NFS datastore using Storage vMotion
- C. Use Storage vMotion to migrate the virtual machine to a new VMFS5 datastore
- D. Map additional LUNs to the ESXi host and extend the datastores

Answer: A

Question: 17

An administrator takes a vSphere snapshot of a virtual machine and applies an OS update. After confirming the update the administrator cannot enable Fault Tolerance on the virtual machine and suspects there are snapshots that have not been consolidated. Which two operations can the administrator perform to verify consolidation is needed? (Choose two.)

- A. Expose the Needs Consolidation column in the virtual machines tab of the host.
- B. Browse the datastore containing the vmdk files and look for files with the "-delta.vmdk" extension.

- C. Expose the Needs Consolidation column in the virtual machine summary tab.
- D. Select and run the vSphere Cluster HealthCheck from the right-click menu of the cluster object.

Answer: A, B

Question: 18

An administrator has created a virtual machine that will be accessed from a public kiosk. Management has requested that the virtual machine be reset to a known state once a week or on demand if requested. Which method is the simplest way to meet this requirement?

- A. Configure the storage array to be vSphere aware and script routine array snapshot restores of the datastore.
- B. Implement a 3rd party imaging server and PXE boot the virtual machine off a static image.
- C. Set the VMDKs of the virtual machine to be Independent-Nonpersistent and schedule restarts of the virtual machine.
- D. Create Nonpersistent disks for the virtual machine and set the guest OS to reboot once a week.

Answer: C

Question: 19

What are three true statements about quiescing virtual machine snapshots? (Choose three.)

- A. vSphere snapshot quiescing only occurs on Windows guest OSes.
- B. The quiescing operation is automatic with any snapshot.
- C. The quiescing operation varies by guest OS.
- D. Quiescing should occur before array-based snapshots to ensure consistency.
- E. VMware Tools is required for quiescing to be successful.

Answer: C, D, E

Question: 20

An administrator has deployed vCenter Data Recovery and wants the largest possible deduplication store. Which three storage options can be used? (Choose three.)

- A. Two CIFS shares
- B. Two RDMS on a FCP array
- C. One NFS mount on the ESXi host and one RDMS on an iSCSI array
- D. One CIFS share and one FCP RDM
- E. Two NFS mounts on the ESXi host

Answer: B, C, E

Question: 21

An administrator has recently upgraded their Update Manager infrastructure to vSphere 5.x. Several hosts and virtual machines have not been upgraded yet. Which vSphere component when upgraded will have the least impact to the existing environment?

- A. Virtual Machine Hardware
- B. ESX Hosts
- C. VMFS datastores
- D. VMware Tools

Answer: D

Question: 22

An administrator is using Update Manager 5.x to update virtual appliances in a vSphere environment. The environment is using the vCenter Server Virtual Appliance (vCSA). What would cause the remediation to fail?

- A. Updating of the appliance can only be done if the vCenter Server Virtual Appliance (vCSA) has been put into Maintenance Mode.
- B. Remediation must be configured on the Appliance Administration page before use.
- C. Remediation of the vCenter Server Virtual Appliance (vCSA) with Update Manager is not supported.
- D. Remediation requires the hosts to be connected to vCenter using an IPv4 address.

Answer: D

Question: 23

An administrator is working to update the hosts and virtual machines in a vSphere 5.x deployment using Update Manager Baselines. Other than host patches, which three items require a separate procedure or process to update? (Choose three.)

- A. Operating system patches
- B. Virtual Appliance updates
- C. Virtual Machine Virtual Hardware upgrades
- D. VMware Tools on machines without VMware Tools already installed
- E. Application patches within the virtual machine

Answer: A, D, E

Question: 24

An administrator selects the Profile Compliance tab of an vSphere cluster, then selects Check Compliance Now. Which features requirements are not checked by this?

- A. vMotion
- B. Fault Tolerance
- C. DRS
- D. Host Profiles

Answer: D

Question: 25

An administrator is troubleshooting an ESXi 5.x host and needs to export diagnostic information. The host is currently managed by a vCenter Server instance. Which two ways can the information be gathered using the vSphere Client? (Choose two.)

- A. Select Home. Under Administration, click System Logs and click the Export System Logs button. Select the affected ESXi host. Select Select All. Select a location and click Finish.
- B. In the vSphere Client, select the affected ESXi host. Right-click the host and select Export Diagnostic Data. Select a location and click OK.

- C. Log in to the ESXi host locally, Select Export System Logs.
- D. In the vSphere Client, select the affected ESXi host. Select File, Export and Export System Logs. Select Select All. Select a location and click Finish.

Answer: A, D

Question: 26

An ESXi 5.x host displays a warning icon in the vSphere console and its summary page lists a configuration issue "SSH for the host has been enabled." What are two ways to clear this warning? (Choose two.)

- A. Using the Security Profile pane of the Configuration tab in the vSphere Client
- B. Using the Direct Console User Interface (DCUI)
- C. Using the Advanced Settings pane of the Configuration tab in the vSphere Client
- D. Using the Networking pane of the Configuration tab in the vSphere Client

Answer: A, B

Question: 27

vCenter reports a connectivity problem with a ESXi 5.x host that is not a member of a cluster. An administrator attempts to connect directly to the host using the vSphere Client but fails with the message "An unknown connection error occurred." Virtual machines running on the host appear to be running and report no problem. What two methods would likely resolve the issue without affecting the virtual machines? (Choose two.)

- A. Enter the service mgmt-vmware restart command from either SSH or local CLI
- B. Select Restart Management Agents in the Direct Console User Interface (DCUI)
- C. Select Reboot Host in the Direct Console User Interface (DCUI)
- D. Enter the services.sh restart command from either SSH or the local CLI

Answer: B, D

Question: 28

Click the Exhibit button.

```

3:58:20pm up 15:52, 300 worlds, 7 VMs, 14 vCPUs; CPU load average: 1.07, 1.10, 1.09
PCPU USED(%): 94 94 93 93 92 86 90 89 AVG: 91
PCPU UTIL(%): 93 93 93 93 93 87 89 89 AVG: 91

```

ID	GID	LMID	NAME	NWLD	%USED	%RUN	%SYS	%WAIT	%VMWAIT	%RDY	%IDLE	%OVRLP	%CSTP	%MLMD	%SNPWT
30172	30172	40901	dsacjose-vmx50	5	0.58	0.52	0.06	497.01	0.15	3.63	96.71	0.01	0.00	0.00	0.00
31109	31109	42222	Dev_App_01	5	60.98	60.30	0.04	395.71	0.00	44.19	0.00	0.08	0.00	0.00	0.00
31112	31112	42228	Dev_SQL_01	5	62.93	63.58	0.02	398.20	0.00	38.52	0.00	0.08	0.00	0.00	0.00
31115	31115	42234	Dev_Web_01	5	67.16	66.76	0.02	398.02	0.00	35.66	0.00	0.10	0.00	0.00	0.00
31275	31275	42457	FileServer01	12	470.63	471.52	0.05	608.00	210.90	113.49	0.00	1.00	9.28	0.00	0.74
31281	31281	42491	jonathanm-SQL20	5	1.83	1.79	0.05	495.49	0.00	3.86	95.39	0.01	0.00	0.00	0.00
31886	31886	43286	victim-001	5	60.60	60.34	0.01	393.30	0.00	46.82	0.00	0.08	0.00	0.00	0.00

ACME Catering Services is using esxtop to troubleshoot a performance problem with one of their ESXi 5.x hosts. Host disconnections from vCenter Server as well as sluggish performance when performing tasks on the host have been observed. Based on the output in the exhibit, how many vCPU's have been assigned to FileServer01?

- A. 1
- B. 2
- C. 4
- D. 8

Answer: D

Get Full Version of Exam VCP510 PDF Q&A

techeXams presents authentic, genuine and valid study material, which promise 100% success in very first attempt. To take optimal results for VCP510 exam, you need to buy full version of VCP510 question and answer. An average of approximately 10 to 15 hours should be spent to study these exam questions and you will surely pass your exam. So come join us and quench your thirst for knowledge.

Get complete VCP510 exam questions and answers by visiting URL

["http://www.techexams.ws/exams/VCP510.do"](http://www.techexams.ws/exams/VCP510.do)